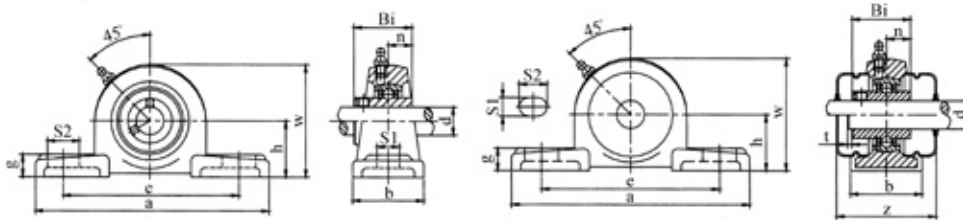
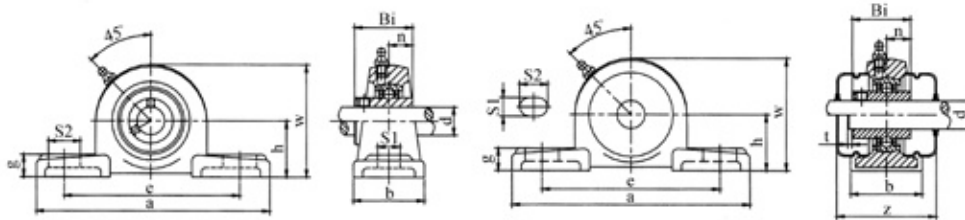


UCP2



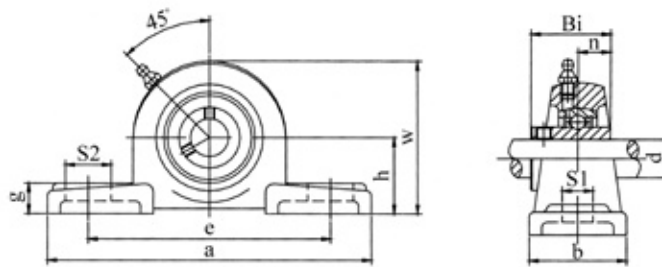
Unit No.	Shaft Dia d		Dimensions(mm)													Bolt Used		Bearing No.	Housing No.	Housing Weight (kg)
	(in)	(mm)	h	a	e	b	S2	S1	g	w	t	Z	Bi	n	(mm)	(in)				
UCP201-8	1/2		30.2	127	95	38	19	13	14	62	2	51	31	12.7	M10	3/8	UC201-8	P203	0.33	
UCP202-9	9/16																UC202-9			
UCP202-10	5/8																UC202-10			
UCP203-11	11/16																UC203-11			
UCP201		12															UC201			
UCP202		15	UC202																	
UCP203		17	UC203																	
UCP204-12	3/4		33.3	127	95	38	19	13	14	65	2	51	31	12.7	M10	3/8	UC204-12	P204	0.46	
UCP204		20															UC204			
UCP205-13	13/16		36.5	140	105	38	19	13	15	71	2	57	34.1	14.3	M10	3/8	UC205-13	P205	0.6	
UCP205-14	7/8																UC205-14			
UCP205-15	15/16																UC205-15			
UCP205-16	1																UC205-16			
UCP205		25															UC205			
UCP206-17	1-1/16		42.9	165	121	48	21	17	17	83	2	62	38.1	15.9	M14	1/2	UC206-17	P206	0.97	
UCP206-18	1-1/8																UC206-18			
UCP206-19	1-3/16																UC206-19			
UCP206-20	1-1/4																UC206-20			
UCP206		30															UC206			
UCP207-20	1-1/4		47.6	167	127	48	21	17	18	93	3	72	42.9	17.5	M14	1/2	UC207-20	P207	1	
UCP207-21	1-5/16																UC207-21			
UCP207-22	1-3/8																UC207-22			
UCP207-23	1-7/16																UC207-23			
UCP207		35															UC207			
UCP208-24	1-1/2		49.2	184	137	54	21	17	18	98	3	82	49.2	19	M14	1/2	UC208-24	P208	1.3	
UCP208-25	1-9/16																UC208-25			
UCP208		40															UC208			
UCP209-26	1-5/8		54	190	146	54	21	17	20	106	3	82	49.2	19	M14	1/2	UC209-26	P209	1.4	
UCP209-27	1-11/16																UC209-27			
UCP209-28	1-3/4																UC209-28			
UCP209		45															UC209			
UCP210-29	1-13/16																57.2			206
UCP210-30	1-7/8		UC210-30																	
UCP210-31	1-15/16		UC210-31																	
UCP210-32	2		UC210-32																	
UCP210		50	UC210																	

UCP2



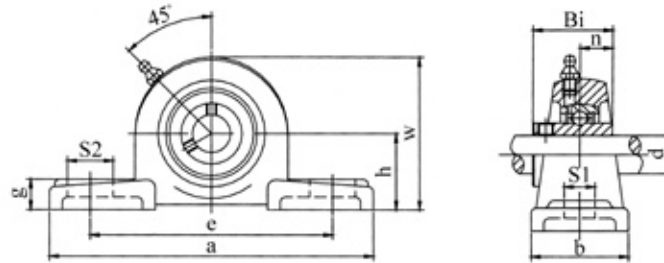
Unit No.	Shaft Dia d		Dimensions(mm)													Bolt Used		Bearing No.	Housing No.	Housing Weight (kg)
	(in)	(mm)	h	a	c	b	S2	S1	g	w	t	Z	Bi	n	(mm)	(in)				
UCP211-32	2		63.5	219	171	60	25	20	23	126	4	92	55.6	22.2	M16	5/8	UC211-32	P211	2.4	
UCP211-33	2-1/16																UC211-33			
UCP211-34	2-1/8																UC211-34			
UCP211-35	2-3/16																UC211-35			
UCP211		55															UC211			
UCP212-36	2-1/4		69.8	241	184	70	25	20	25	138	4	102	65.1	25.4	M16	5/8	UC212-36	P212	2.8	
UCP212-37	2-5/16																UC212-37			
UCP212-38	2-3/8																UC212-38			
UCP212-39	2-7/16																UC212-39			
UCP212		60															UC212			
UCP213-40	2-1/2		76.2	265	203	70	29	25	27	151	4	107	65.1	25.4	M20	3/4	UC213-40	P213	3.5	
UCP213-41	2-9/16																UC213-41			
UCP213		65															UC213			
UCP214-42	2-5/8		79.4	266	210	72	31	25	27	157			74.6	30.2	M20	3/4	UC214-42	P214	4.45	
UCP214-43	2-11/16																UC214-43			
UCP214-44	2-3/4																UC214-44			
UCP214		70															UC214			
UCP215-45	2-13/16		82.6	275	217	74	31	25	28	163			77.8	33.3	M20	3/4	UC215-45	P215	4.9	
UCP215-46	2-7/8																UC215-46			
UCP215-47	2-15/16																UC215-47			
UCP215-48	3																UC215-48			
UCP215		75															UC215			
UCP216-50	3-1/8		88.9	292	232	78	31	25	30	175			82.6	33.3	M20	3/4	UC216-50	P216	5.8	
UCP216		80															UC216			
UCP217-52	3-1/4		95.2	310	247	83	31	25	32	187			85.7	34.1	M20	3/4	UC217-52	P217	6.9	
UCP217		85															UC217			
UCP218-56	3-1/2		101.6	327	262	88	33	27	33	200			96	39.7	M22	7/8	UC218-56	P218	8.1	
UCP218		90															UC218			

UCP3



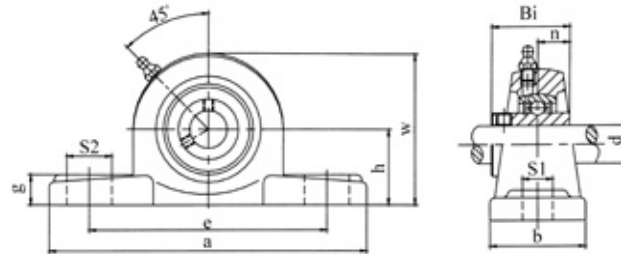
Unit No.	Shaft Dia d		Dimensions(mm)										Bolt Used		Bearing No.	Housing No.	Housing Weight (kg)
	(in)	(mm)	h	a	e	b	s2	s1	g	w	Bi	n	(mm)	(in)			
UCP305-14	7/8		45	175	132	45	20	17	15	85	38	15	M14	1/2	UC305-14	P305	0.9
UCP305-15	15/16	UC305-15															
UCP305-16	1	UC305-16															
UCP305	25	UC305															
UCP306-18	1-1/8		50	180	140	50	20	17	18	95	43	17	M14	1/2	UC306-18	P306	1.1
UCP306-19	1-3/16	UC306-19															
UCP306	30	UC306															
UCP307-20	1-1/4		56	210	160	56	25	17	20	106	48	19	M14	1/2	UC307-20	P307	1.95
UCP307-21	1-5/16	UC307-21															
UCP307-22	1-3/8	UC307-22															
UCP307-23	1-7/16	UC307-23															
UCP307	35	UC307															
UCP308-24	1-1/2		60	220	170	60	27	17	22	116	52	19	M14	1/2	UC308-24	P308	2.2
UCP308-25	1-9/16	UC308-25															
UCP308	40	UC308															
UCP309-26	1-5/8		67	245	190	67	30	20	24	129	57	22	M16	5/8	UC309-26	P309	3.3
UCP309-27	1-11/16	UC309-27															
UCP309-28	1-3/4	UC309-28															
UCP309	45	UC309															
UCP310-30	1-7/8		75	275	212	75	35	20	27	143	61	22	M16	5/8	UC310-30	P310	4.8
UCP310-31	1-15/16	UC310-31															
UCP310	50	UC310															
UCP311-32	2		80	310	236	80	38	20	30	154	66	25	M16	5/8	UC311-32	P311	5.3
UCP311-34	2-1/8	UC311-34															
UCP311-35	2-3/16	UC311-35															
UCP311	55	UC311															

UCP3



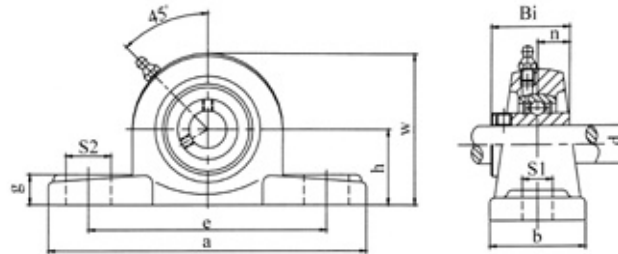
Unit No.	Shaft Dia d		Dimensions(mm)										Bolt Used		Bearing No.	Housing No.	Housing Weight (kg)
	(in)	(mm)	h	a	e	b	s2	s1	g	w	Bi	n	(mm)	(in)			
UCP312-36	2-1/4		85	330	250	85	38	25	32	165	71	26	M20	3/4	UC312-36	P312	6.3
UCP312-38	2-3/8	UC312-38															
UCP312-39	2-7/16	UC312-39															
UCP312	60	UC312															
UCP313-40	2-1/2		90	340	260	90	38	25	33	176	75	30	M20	3/4	UC313-40	P313	8
UCP313	65	UC313															
UCP314-44	2-3/4		95	360	280	90	40	27	35	187	78	33	M22	7/8	UC314-44	P314	8.3
UCP314	70	UC314															
UCP315-48	3		100	380	290	100	40	27	35	198	82	32	M22	7/8	UC315-48	P315	9.5
UCP315	75	UC315															
UCP316-50	3-1/8		106	400	300	110	40	27	40	210	86	34	M22	7/8	UC316-50	P316	12.5
UCP316	80	UC315															
UCP317-52	3-1/4		112	420	320	110	45	33	40	220	96	40	M27	1	UC317-52	P317	14.5
UCP317	85	UC317															
UCP318-56	3-1/2		118	430	330	110	45	33	45	235	96	40	M27	1	UC318-56	P318	20.4
UCP318	90	UC318															
UCP319-60	3-3/4		125	470	360	120	50	36	45	250	103	41	M30	1-1/8	UC319-60	P319	22.3
UCP319	95	UC319															
UCP320-64	4		140	490	380	120	50	36	50	275	108	42	M30	1-1/8	UC320-64	P320	25
UCP320	100	UC320															
UCP321		105	140	490	380	120	50	36	50	280	112	44	M30	1-1/8	UC321	P321	24
UCP322		110	150	520	400	140	55	40	55	300	117	46	M33	1-1/4	UC322	P322	27.5
UCP324		120	160	570	450	140	55	40	65	320	126	51	M33	1-1/4	UC324	P324	32.3
UCP326		130	180	600	480	140	55	40	75	355	135	54	M33	1-1/4	UC326	P326	41
UCP328		140	200	620	500	140	55	40	75	390	145	59	M33	1-1/4	UC328	P328	50

UCLP2



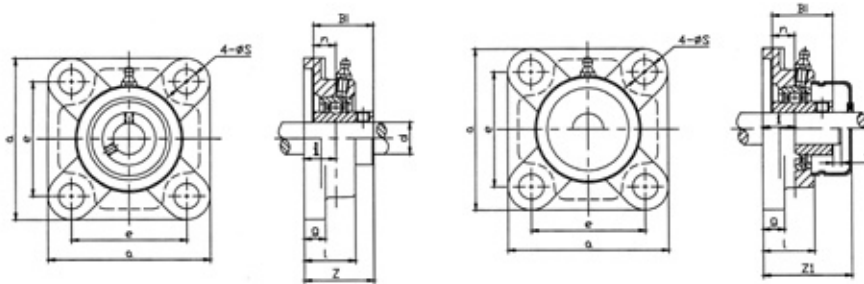
Unit No.	Shaft Dia d		Dimensions(mm)										Bolt Used		Bearing No.	Housing No.	Housing Weight (kg)
	(in)	(mm)	h	a	e	b	s1	s2	g	w	Bi	n	(mm)	(in)			
UCLP201-8	1/2		27	121	89	29	12	16	13	56	26	10	M10	3/8	UC201-8	LP203	0.38
UCLP202-9	9/16														UC202-9		
UCLP202-10	5/8														UC202-10		
UCLP203-11	11/16														UC203-11		
UCLP201		12													UC201		
UCLP202		15													UC202		
UCLP203		17	UC203														
UCLP204-12	3/4		31.8	133	98	32	12	19	13	65	31	12.7	M10	3/8	UC204-12	LP204	0.5
UCLP204		20													UC204		
UCLP205-13	13/16		33.3	140	105	38	12	19	16	68	34	14.3	M10	3/8	UC205-13	LP205	0.65
UCLP205-14	7/8														UC205-14		
UCLP205-15	15/16														UC205-15		
UCLP205-16	1														UC205-16		
UCLP205		25													UC205		
UCLP206-17	1-1/16		39.7	165	124	41	15	22	17	81	38.1	15.9	M12	7/16	UC206-17	LP206	0.85
UCLP206-18	1-1/8														UC206-18		
UCLP206-19	1-3/16														UC206-19		
UCLP206-20	1-1/4														UC206-20		
UCLP206		30													UC206		
UCLP207-20	1-1/4		46	178	137	48	15	22	19	94	42.9	17.5	M12	7/16	UC207-20	LP207	1.25
UCLP207-21	1-5/16														UC207-21		
UCLP207-22	1-3/8														UC207-22		
UCLP207-23	1-7/16														UC207-23		
UCLP207		35													UC207		
UCLP208-24	1-1/2		49.2	184	143	51	15	22	21	100	49.2	19	M12	7/16	UC208-24	LP208	1.45
UCLP208-25	1-9/16														UC208-25		
UCLP208		40													UC208		

UCLP2



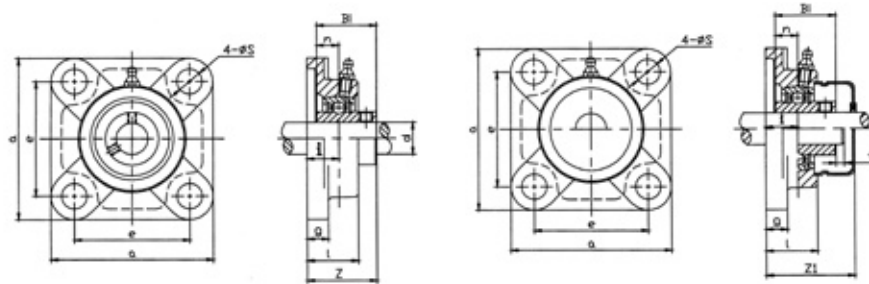
Unit No.	Shaft Dia d		Dimensions(mm)										Bolt Used		Bearing No.	Housing No.	Housing Weight (kg)
	(in)	(mm)	h	a	e	b	s1	s2	g	w	Bi	n	(mm)	(in)			
UCLP209-26	1-5/8		52.4	197	152	54	15	25	21	106	49.2	19	M12	7/16	UC209-26	LP209	1.8
UCLP209-27	1-11/16														UC209-27		
UCLP209-28	1-3/4														UC209-28		
UCLP209		45													UC209		
UCLP210-29	1-13/16		55.6	213	165	57	15	25	22	113	51.6	19	M12	7/16	UC210-29	LP210	1.95
UCLP210-30	1-7/8														UC210-30		
UCLP210-31	1-15/16														UC210-31		
UCLP210-32	2														UC210-32		
UCLP210		50													UC210		
UCLP211-32	2		61.9	235	181	64	19	29	25	125	55.6	22.2	M16	5/8	UC211-32	LP211	2.85
UCLP211-33	2-1/16														UC211-33		
UCLP211-34	2-1/8														UC211-34		
UCLP211-35	2-3/16														UC211-35		
UCLP211		55													UC211		
UCLP212-36	2-1/4		68.3	248	194	70	19	29	29	138	65.1	25.4	M16	5/8	UC212-36	LP212	3.5
UCLP212-37	2-5/16														UC212-37		
UCLP212-38	2-3/8														UC212-38		
UCLP212-39	2-7/16														UC212-39		
UCLP212		60													UC212		
UCLP213-40	2-1/2		68.3	248	194	70	19	29	29	138	65.1	25.4	M16	5/8	UC213-40	LP213	3.6
UCLP213-41	2-9/16														UC213-41		
UCLP213		65													UC213		

UCF2



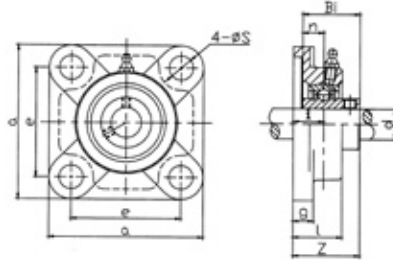
Unit No.	Shaft Dia d		Dimensions(mm)											Bolt Used		Bearing No.	Housing No.	Housing Weight (kg)																																																																																																																																																																																																																																																																																																																																																																																																																																																																																																																																																																																																																																					
	(in)	(mm)	a	e	i	g	l	s	t	z1	z	Bi	n	(mm)	(in)																																																																																																																																																																																																																																																																																																																																																																																																																																																																																																																																																																																																																																								
UCF201-8	1/2																UCF202-9	9/16																UCF202-10	5/8																UCF203-11	11/16		76	54	15	11	25.5	11.5			31	26	10	M10	3/8	UC201-8	F203	0.5	UCF201		12														UCF202		15														UCF203		17														UCF201-8	1/2															UCF202-9	9/16															UCF202-10	5/8															UCF203-11	11/16															UCF204-12	3/4		86	64	15	12	25.5	12	2	40.5	33.3	31	12.7	M10	3/8	UC203-11	F204	0.6	UCF201		12														UCF202		15														UCF203		17														UCF204		20														UCF205-13	13/16															UCF205-14	7/8															UCF205-15	15/16		95	70	16	14	27	12	2	44.5	35.8	34.1	14.3	M10	3/8	UC204-12	F205	0.86	UCF205-16	1															UCF205		25														UCF206-17	1-1/16															UCF206-18	1-1/8															UCF206-19	1-3/16		108	83	18	14	31	12	2	49	40.2	38.1	15.9	M10	3/8	UC205-13	F206	1.1	UCF206-20	1-1/4															UCF206		30														UCF207-20	1-1/4															UCF207-21	1-5/16															UCF207-22	1-3/18		117	92	19	16	34	14	3	55	44.4	42.9	17.5	M12	7/16	UC206-17	F207	1.6	UCF207-23	1-7/16															UCF207		35														UCF208-24	1-1/2															UCF208-25	1-9/16		130	102	21	16	36	16	3	62	51.2	49.2	19	M14	1/2	UC207-20	F208	1.9	UCF208		40														UCF209-26	1-5/8															UCF209-27	1-11/16		137	105	22	18	38	16	3	63	52.2	49.2	19	M14	1/2	UC208-24	F209	2.4	UCF209-28	1-3/4															UCF209		45													
UCF202-9	9/16																UCF202-10	5/8																UCF203-11	11/16		76	54	15	11	25.5	11.5			31	26	10	M10	3/8	UC201-8	F203	0.5	UCF201		12																UCF202		15														UCF203		17														UCF201-8	1/2															UCF202-9	9/16															UCF202-10	5/8															UCF203-11	11/16															UCF204-12	3/4		86	64	15	12	25.5	12	2	40.5	33.3	31	12.7	M10	3/8	UC203-11	F204	0.6	UCF201		12																UCF202		15														UCF203		17														UCF204		20														UCF205-13	13/16															UCF205-14	7/8															UCF205-15	15/16		95	70	16	14	27	12	2	44.5	35.8	34.1	14.3	M10	3/8	UC204-12	F205	0.86	UCF205-16	1																	UCF205		25														UCF206-17	1-1/16															UCF206-18	1-1/8															UCF206-19	1-3/16		108	83	18	14	31	12	2	49	40.2	38.1	15.9	M10	3/8	UC205-13	F206	1.1	UCF206-20	1-1/4																	UCF206		30														UCF207-20	1-1/4															UCF207-21	1-5/16															UCF207-22	1-3/18		117	92	19	16	34	14	3	55	44.4	42.9	17.5	M12	7/16	UC206-17	F207	1.6	UCF207-23	1-7/16																	UCF207		35														UCF208-24	1-1/2															UCF208-25	1-9/16		130	102	21	16	36	16	3	62	51.2	49.2	19	M14	1/2	UC207-20	F208	1.9	UCF208		40																UCF209-26	1-5/8															UCF209-27	1-11/16		137	105	22	18	38	16	3	63	52.2	49.2	19	M14	1/2	UC208-24	F209	2.4	UCF209-28	1-3/4																	UCF209		45																
UCF202-10	5/8																UCF203-11	11/16		76	54	15	11	25.5	11.5			31	26	10	M10	3/8	UC201-8	F203	0.5	UCF201		12																UCF202		15																UCF203		17														UCF201-8	1/2															UCF202-9	9/16															UCF202-10	5/8															UCF203-11	11/16															UCF204-12	3/4		86	64	15	12	25.5	12	2	40.5	33.3	31	12.7	M10	3/8	UC203-11	F204	0.6	UCF201		12																UCF202		15																UCF203		17														UCF204		20														UCF205-13	13/16															UCF205-14	7/8															UCF205-15	15/16		95	70	16	14	27	12	2	44.5	35.8	34.1	14.3	M10	3/8	UC204-12	F205	0.86	UCF205-16	1																	UCF205		25																UCF206-17	1-1/16															UCF206-18	1-1/8															UCF206-19	1-3/16		108	83	18	14	31	12	2	49	40.2	38.1	15.9	M10	3/8	UC205-13	F206	1.1	UCF206-20	1-1/4																	UCF206				30														UCF207-20	1-1/4															UCF207-21	1-5/16															UCF207-22	1-3/18		117	92	19	16	34	14	3	55	44.4	42.9	17.5	M12	7/16	UC206-17	F207	1.6	UCF207-23	1-7/16																			UCF207		35														UCF208-24	1-1/2															UCF208-25	1-9/16		130	102	21	16	36	16	3	62	51.2	49.2	19	M14	1/2	UC207-20	F208	1.9	UCF208		40																UCF209-26	1-5/8															UCF209-27	1-11/16		137	105	22	18	38	16	3	63	52.2	49.2	19	M14	1/2	UC208-24	F209	2.4	UCF209-28	1-3/4																			UCF209		45																					
UCF203-11	11/16		76	54	15	11	25.5	11.5			31	26	10	M10	3/8	UC201-8	F203	0.5																																																																																																																																																																																																																																																																																																																																																																																																																																																																																																																																																																																																																																					
UCF201		12														UCF202				15																UCF203		17																UCF201-8	1/2																	UCF202-9	9/16															UCF202-10	5/8															UCF203-11	11/16															UCF204-12	3/4		86	64	15	12	25.5	12	2	40.5	33.3	31	12.7	M10	3/8	UC203-11	F204	0.6	UCF201		12														UCF202		15																UCF203		17																UCF204		20																UCF205-13	13/16															UCF205-14	7/8															UCF205-15	15/16		95	70	16	14	27	12	2	44.5	35.8	34.1	14.3	M10	3/8	UC204-12	F205	0.86	UCF205-16	1															UCF205		25																UCF206-17	1-1/16																	UCF206-18	1-1/8															UCF206-19	1-3/16		108	83	18	14	31	12	2	49	40.2	38.1	15.9	M10	3/8	UC205-13	F206	1.1	UCF206-20	1-1/4															UCF206		30																UCF207-20	1-1/4																	UCF207-21	1-5/16															UCF207-22	1-3/18		117	92	19	16	34	14	3	55	44.4	42.9	17.5	M12	7/16	UC206-17	F207	1.6	UCF207-23	1-7/16															UCF207		35																UCF208-24	1-1/2															UCF208-25	1-9/16		130	102	21	16	36	16	3	62	51.2	49.2	19	M14	1/2	UC207-20	F208	1.9	UCF208		40														UCF209-26	1-5/8															UCF209-27	1-11/16		137	105	22	18	38	16	3	63	52.2	49.2	19	M14	1/2	UC208-24	F209	2.4	UCF209-28	1-3/4															UCF209		45																																																											
UCF202		15														UCF203				17																UCF201-8	1/2																	UCF202-9	9/16																	UCF202-10	5/8															UCF203-11	11/16															UCF204-12	3/4		86	64	15	12	25.5	12	2	40.5	33.3	31	12.7	M10	3/8	UC203-11	F204	0.6	UCF201		12																UCF202		15														UCF203		17																UCF204		20																UCF205-13	13/16																	UCF205-14	7/8															UCF205-15	15/16		95	70	16	14	27	12	2	44.5	35.8	34.1	14.3	M10	3/8	UC204-12	F205	0.86	UCF205-16	1																	UCF205		25														UCF206-17	1-1/16																	UCF206-18	1-1/8															UCF206-19	1-3/16		108	83	18	14	31	12	2	49	40.2	38.1	15.9	M10	3/8	UC205-13	F206	1.1	UCF206-20	1-1/4																	UCF206		30														UCF207-20	1-1/4																	UCF207-21	1-5/16															UCF207-22	1-3/18		117	92	19	16	34	14	3	55	44.4	42.9	17.5	M12	7/16	UC206-17	F207	1.6	UCF207-23	1-7/16																	UCF207		35														UCF208-24	1-1/2															UCF208-25	1-9/16		130	102	21	16	36	16	3	62	51.2	49.2	19	M14	1/2	UC207-20	F208	1.9	UCF208		40																UCF209-26	1-5/8															UCF209-27	1-11/16		137	105	22	18	38	16	3	63	52.2	49.2	19	M14	1/2	UC208-24	F209	2.4	UCF209-28	1-3/4																	UCF209		45																																																																					
UCF203		17														UCF201-8			1/2																	UCF202-9	9/16																	UCF202-10	5/8																	UCF203-11	11/16															UCF204-12	3/4		86	64	15	12	25.5	12	2	40.5	33.3	31	12.7	M10	3/8	UC203-11	F204	0.6	UCF201		12																UCF202		15																UCF203		17														UCF204		20																UCF205-13	13/16																	UCF205-14	7/8																	UCF205-15	15/16		95	70	16	14	27	12	2	44.5	35.8	34.1	14.3	M10	3/8	UC204-12	F205	0.86	UCF205-16	1																	UCF205		25																UCF206-17	1-1/16															UCF206-18	1-1/8															UCF206-19	1-3/16		108	83	18	14	31	12	2	49	40.2	38.1	15.9	M10	3/8	UC205-13	F206	1.1	UCF206-20	1-1/4																	UCF206		30																UCF207-20	1-1/4															UCF207-21	1-5/16															UCF207-22	1-3/18		117	92	19	16	34	14	3	55	44.4	42.9	17.5	M12	7/16	UC206-17	F207	1.6	UCF207-23	1-7/16																	UCF207		35																UCF208-24	1-1/2															UCF208-25	1-9/16		130	102	21	16	36	16	3	62	51.2	49.2	19	M14	1/2	UC207-20	F208	1.9	UCF208		40																UCF209-26	1-5/8															UCF209-27	1-11/16		137	105	22	18	38	16	3	63	52.2	49.2	19	M14	1/2	UC208-24	F209	2.4	UCF209-28	1-3/4																	UCF209		45																																																																																	
UCF201-8	1/2															UCF202-9			9/16																	UCF202-10	5/8																	UCF203-11	11/16															UCF204-12	3/4		86	64	15	12	25.5	12	2	40.5	33.3	31	12.7	M10	3/8	UC203-11	F204	0.6	UCF201		12																UCF202		15																UCF203		17																UCF204		20														UCF205-13	13/16																	UCF205-14	7/8																	UCF205-15	15/16		95	70	16	14	27	12	2	44.5	35.8	34.1	14.3	M10	3/8	UC204-12	F205	0.86	UCF205-16	1																	UCF205		25																UCF206-17	1-1/16																	UCF206-18	1-1/8															UCF206-19	1-3/16		108	83	18	14	31	12	2	49	40.2	38.1	15.9	M10	3/8	UC205-13	F206	1.1	UCF206-20	1-1/4																	UCF206		30																UCF207-20	1-1/4																	UCF207-21	1-5/16															UCF207-22	1-3/18		117	92	19	16	34	14	3	55	44.4	42.9	17.5	M12	7/16	UC206-17	F207	1.6	UCF207-23	1-7/16																	UCF207		35																UCF208-24	1-1/2															UCF208-25	1-9/16		130	102	21	16	36	16	3	62	51.2	49.2	19	M14	1/2	UC207-20	F208	1.9	UCF208		40																UCF209-26	1-5/8															UCF209-27	1-11/16		137	105	22	18	38	16	3	63	52.2	49.2	19	M14	1/2	UC208-24	F209	2.4	UCF209-28	1-3/4																	UCF209		45																																																																																															
UCF202-9	9/16															UCF202-10			5/8																	UCF203-11	11/16															UCF204-12	3/4		86	64	15	12	25.5	12	2	40.5	33.3	31	12.7	M10	3/8	UC203-11	F204	0.6	UCF201		12																UCF202		15																UCF203		17																UCF204		20																UCF205-13	13/16															UCF205-14	7/8																	UCF205-15	15/16		95	70	16	14	27	12	2	44.5	35.8	34.1	14.3	M10	3/8	UC204-12	F205	0.86	UCF205-16	1																	UCF205		25																UCF206-17	1-1/16																	UCF206-18	1-1/8															UCF206-19	1-3/16		108	83	18	14	31	12	2	49	40.2	38.1	15.9	M10	3/8	UC205-13	F206	1.1	UCF206-20	1-1/4																	UCF206		30																UCF207-20	1-1/4																	UCF207-21	1-5/16															UCF207-22	1-3/18		117	92	19	16	34	14	3	55	44.4	42.9	17.5	M12	7/16	UC206-17	F207	1.6	UCF207-23	1-7/16																	UCF207		35																UCF208-24	1-1/2															UCF208-25	1-9/16		130	102	21	16	36	16	3	62	51.2	49.2	19	M14	1/2	UC207-20	F208	1.9	UCF208		40																UCF209-26	1-5/8															UCF209-27	1-11/16		137	105	22	18	38	16	3	63	52.2	49.2	19	M14	1/2	UC208-24	F209	2.4	UCF209-28	1-3/4																	UCF209		45																																																																																																																	
UCF202-10	5/8															UCF203-11			11/16															UCF204-12	3/4		86	64	15	12	25.5	12	2	40.5	33.3	31	12.7	M10	3/8	UC203-11	F204	0.6	UCF201		12																UCF202		15																UCF203		17																UCF204		20																UCF205-13	13/16																	UCF205-14	7/8															UCF205-15	15/16		95	70	16	14	27	12	2	44.5	35.8	34.1	14.3	M10	3/8	UC204-12	F205	0.86	UCF205-16	1																	UCF205		25																UCF206-17	1-1/16																	UCF206-18	1-1/8															UCF206-19	1-3/16		108	83	18	14	31	12	2	49	40.2	38.1	15.9	M10	3/8	UC205-13	F206	1.1	UCF206-20	1-1/4																	UCF206		30																UCF207-20	1-1/4																	UCF207-21	1-5/16															UCF207-22	1-3/18		117	92	19	16	34	14	3	55	44.4	42.9	17.5	M12	7/16	UC206-17	F207	1.6	UCF207-23	1-7/16																	UCF207		35																UCF208-24	1-1/2															UCF208-25	1-9/16		130	102	21	16	36	16	3	62	51.2	49.2	19	M14	1/2	UC207-20	F208	1.9	UCF208		40																UCF209-26	1-5/8															UCF209-27	1-11/16		137	105	22	18	38	16	3	63	52.2	49.2	19	M14	1/2	UC208-24	F209	2.4	UCF209-28	1-3/4																	UCF209		45																																																																																																																																			
UCF203-11	11/16															UCF204-12	3/4		86	64	15	12	25.5	12	2	40.5	33.3	31	12.7	M10	3/8	UC203-11	F204	0.6	UCF201		12																UCF202		15																UCF203		17																UCF204		20																UCF205-13	13/16																	UCF205-14	7/8																	UCF205-15	15/16		95	70	16	14	27	12	2	44.5	35.8	34.1	14.3	M10	3/8	UC204-12	F205	0.86	UCF205-16	1																	UCF205		25																UCF206-17	1-1/16																	UCF206-18	1-1/8															UCF206-19	1-3/16		108	83	18	14	31	12	2	49	40.2	38.1	15.9	M10	3/8	UC205-13	F206	1.1	UCF206-20	1-1/4																	UCF206		30																UCF207-20	1-1/4																	UCF207-21	1-5/16															UCF207-22	1-3/18		117	92	19	16	34	14	3	55	44.4	42.9	17.5	M12	7/16	UC206-17	F207	1.6	UCF207-23	1-7/16																	UCF207		35																UCF208-24	1-1/2															UCF208-25	1-9/16		130	102	21	16	36	16	3	62	51.2	49.2	19	M14	1/2	UC207-20	F208	1.9	UCF208		40																UCF209-26	1-5/8															UCF209-27	1-11/16		137	105	22	18	38	16	3	63	52.2	49.2	19	M14	1/2	UC208-24	F209	2.4	UCF209-28	1-3/4																	UCF209		45																																																																																																																																																			
UCF204-12	3/4		86	64	15	12	25.5	12	2	40.5	33.3	31	12.7	M10	3/8	UC203-11	F204	0.6																																																																																																																																																																																																																																																																																																																																																																																																																																																																																																																																																																																																																																					
UCF201		12														UCF202				15																UCF203		17																UCF204		20																UCF205-13	13/16																	UCF205-14	7/8																	UCF205-15	15/16		95	70	16	14	27	12	2	44.5	35.8	34.1	14.3	M10	3/8	UC204-12	F205	0.86	UCF205-16	1															UCF205		25														UCF206-17			1-1/16																	UCF206-18	1-1/8															UCF206-19	1-3/16		108	83	18	14	31	12	2	49	40.2	38.1	15.9	M10	3/8	UC205-13	F206	1.1	UCF206-20	1-1/4															UCF206		30														UCF207-20	1-1/4																	UCF207-21			1-5/16															UCF207-22	1-3/18		117	92	19	16	34	14	3	55	44.4	42.9	17.5	M12	7/16	UC206-17	F207	1.6	UCF207-23	1-7/16															UCF207		35														UCF208-24	1-1/2																	UCF208-25	1-9/16		130	102	21	16	36	16	3	62	51.2	49.2	19	M14	1/2	UC207-20	F208	1.9	UCF208		40														UCF209-26	1-5/8															UCF209-27	1-11/16		137	105	22	18	38	16	3	63	52.2	49.2	19	M14	1/2	UC208-24	F209	2.4	UCF209-28	1-3/4															UCF209		45																																																																																																																																																																																																
UCF202		15														UCF203				17																UCF204		20																UCF205-13	13/16																	UCF205-14	7/8																	UCF205-15	15/16		95	70	16	14	27	12	2	44.5	35.8	34.1	14.3	M10	3/8	UC204-12	F205	0.86	UCF205-16	1																	UCF205		25														UCF206-17	1-1/16															UCF206-18			1-1/8															UCF206-19	1-3/16		108	83	18	14	31	12	2	49	40.2	38.1	15.9	M10	3/8	UC205-13	F206	1.1	UCF206-20	1-1/4																	UCF206		30														UCF207-20	1-1/4															UCF207-21	1-5/16																	UCF207-22	1-3/18		117	92	19	16	34	14	3	55	44.4	42.9	17.5	M12	7/16	UC206-17	F207	1.6	UCF207-23	1-7/16																	UCF207		35														UCF208-24	1-1/2															UCF208-25	1-9/16		130	102	21	16	36	16	3	62	51.2	49.2	19	M14	1/2	UC207-20	F208	1.9	UCF208		40																UCF209-26	1-5/8															UCF209-27	1-11/16		137	105	22	18	38	16	3	63	52.2	49.2	19	M14	1/2	UC208-24	F209	2.4	UCF209-28	1-3/4																	UCF209		45																																																																																																																																																																																																														
UCF203		17														UCF204				20																UCF205-13	13/16																	UCF205-14	7/8																	UCF205-15	15/16		95	70	16	14	27	12	2	44.5	35.8	34.1	14.3	M10	3/8	UC204-12	F205	0.86	UCF205-16	1																	UCF205		25																UCF206-17	1-1/16															UCF206-18	1-1/8															UCF206-19	1-3/16		108	83	18	14	31	12	2	49	40.2	38.1	15.9	M10	3/8	UC205-13	F206	1.1	UCF206-20	1-1/4																	UCF206		30																UCF207-20	1-1/4															UCF207-21	1-5/16															UCF207-22	1-3/18		117	92	19	16	34	14	3	55	44.4	42.9	17.5	M12	7/16	UC206-17	F207	1.6	UCF207-23	1-7/16																	UCF207		35																UCF208-24	1-1/2															UCF208-25	1-9/16		130	102	21	16	36	16	3	62	51.2	49.2	19	M14	1/2	UC207-20	F208	1.9	UCF208		40																UCF209-26	1-5/8															UCF209-27	1-11/16		137	105	22	18	38	16	3	63	52.2	49.2	19	M14	1/2	UC208-24	F209	2.4	UCF209-28	1-3/4																	UCF209		45																																																																																																																																																																																																																														
UCF204		20														UCF205-13			13/16																	UCF205-14	7/8																	UCF205-15	15/16		95	70	16	14	27	12	2	44.5	35.8	34.1	14.3	M10	3/8	UC204-12	F205	0.86	UCF205-16	1																	UCF205		25																UCF206-17	1-1/16																	UCF206-18	1-1/8															UCF206-19	1-3/16		108	83	18	14	31	12	2	49	40.2	38.1	15.9	M10	3/8	UC205-13	F206	1.1	UCF206-20	1-1/4																	UCF206		30																UCF207-20	1-1/4																	UCF207-21	1-5/16															UCF207-22	1-3/18		117	92	19	16	34	14	3	55	44.4	42.9	17.5	M12	7/16	UC206-17	F207	1.6	UCF207-23	1-7/16																	UCF207		35																UCF208-24	1-1/2															UCF208-25	1-9/16		130	102	21	16	36	16	3	62	51.2	49.2	19	M14	1/2	UC207-20	F208	1.9	UCF208		40																UCF209-26	1-5/8															UCF209-27	1-11/16		137	105	22	18	38	16	3	63	52.2	49.2	19	M14	1/2	UC208-24	F209	2.4	UCF209-28	1-3/4																	UCF209		45																																																																																																																																																																																																																																												
UCF205-13	13/16															UCF205-14			7/8																	UCF205-15	15/16		95	70	16	14	27	12	2	44.5	35.8	34.1	14.3	M10	3/8	UC204-12	F205	0.86	UCF205-16	1																	UCF205		25																UCF206-17	1-1/16																	UCF206-18	1-1/8															UCF206-19	1-3/16		108	83	18	14	31	12	2	49	40.2	38.1	15.9	M10	3/8	UC205-13	F206	1.1	UCF206-20	1-1/4																	UCF206		30																UCF207-20	1-1/4																	UCF207-21	1-5/16															UCF207-22	1-3/18		117	92	19	16	34	14	3	55	44.4	42.9	17.5	M12	7/16	UC206-17	F207	1.6	UCF207-23	1-7/16																	UCF207		35																UCF208-24	1-1/2															UCF208-25	1-9/16		130	102	21	16	36	16	3	62	51.2	49.2	19	M14	1/2	UC207-20	F208	1.9	UCF208		40																UCF209-26	1-5/8															UCF209-27	1-11/16		137	105	22	18	38	16	3	63	52.2	49.2	19	M14	1/2	UC208-24	F209	2.4	UCF209-28	1-3/4																	UCF209		45																																																																																																																																																																																																																																																														
UCF205-14	7/8															UCF205-15			15/16		95	70	16	14	27	12	2	44.5	35.8	34.1	14.3	M10	3/8	UC204-12	F205	0.86	UCF205-16	1																	UCF205		25																UCF206-17	1-1/16																	UCF206-18	1-1/8															UCF206-19	1-3/16		108	83	18	14	31	12	2	49	40.2	38.1	15.9	M10	3/8	UC205-13	F206	1.1	UCF206-20	1-1/4																	UCF206		30																UCF207-20	1-1/4																	UCF207-21	1-5/16															UCF207-22	1-3/18		117	92	19	16	34	14	3	55	44.4	42.9	17.5	M12	7/16	UC206-17	F207	1.6	UCF207-23	1-7/16																	UCF207		35																UCF208-24	1-1/2															UCF208-25	1-9/16		130	102	21	16	36	16	3	62	51.2	49.2	19	M14	1/2	UC207-20	F208	1.9	UCF208		40																UCF209-26	1-5/8															UCF209-27	1-11/16		137	105	22	18	38	16	3	63	52.2	49.2	19	M14	1/2	UC208-24	F209	2.4	UCF209-28	1-3/4																	UCF209		45																																																																																																																																																																																																																																																																																
UCF205-15	15/16		95	70	16	14	27	12	2	44.5	35.8	34.1	14.3	M10	3/8	UC204-12	F205	0.86																																																																																																																																																																																																																																																																																																																																																																																																																																																																																																																																																																																																																																					
UCF205-16	1															UCF205				25														UCF206-17			1-1/16															UCF206-18			1-1/8															UCF206-19	1-3/16		108	83	18	14	31	12	2	49	40.2	38.1	15.9	M10	3/8	UC205-13	F206	1.1	UCF206-20	1-1/4															UCF206		30														UCF207-20	1-1/4																	UCF207-21	1-5/16																	UCF207-22	1-3/18		117	92	19	16	34	14	3	55	44.4	42.9	17.5	M12	7/16	UC206-17	F207	1.6	UCF207-23	1-7/16															UCF207		35														UCF208-24	1-1/2																	UCF208-25	1-9/16		130	102	21	16	36	16	3	62	51.2	49.2	19	M14	1/2	UC207-20	F208	1.9	UCF208		40														UCF209-26	1-5/8															UCF209-27	1-11/16		137	105	22	18	38	16	3	63	52.2	49.2	19	M14	1/2	UC208-24	F209	2.4	UCF209-28	1-3/4															UCF209		45																																																																																																																																																																																																																																																																																																																													
UCF205		25														UCF206-17			1-1/16															UCF206-18			1-1/8															UCF206-19	1-3/16		108	83	18	14	31	12	2	49	40.2	38.1	15.9	M10	3/8	UC205-13	F206	1.1	UCF206-20	1-1/4																	UCF206		30														UCF207-20	1-1/4															UCF207-21	1-5/16																	UCF207-22	1-3/18		117	92	19	16	34	14	3	55	44.4	42.9	17.5	M12	7/16	UC206-17	F207	1.6	UCF207-23	1-7/16																	UCF207		35														UCF208-24	1-1/2															UCF208-25	1-9/16		130	102	21	16	36	16	3	62	51.2	49.2	19	M14	1/2	UC207-20	F208	1.9	UCF208		40																UCF209-26	1-5/8															UCF209-27	1-11/16		137	105	22	18	38	16	3	63	52.2	49.2	19	M14	1/2	UC208-24	F209	2.4	UCF209-28	1-3/4																	UCF209		45																																																																																																																																																																																																																																																																																																																																											
UCF206-17	1-1/16															UCF206-18			1-1/8															UCF206-19	1-3/16		108	83	18	14	31	12	2	49	40.2	38.1	15.9	M10	3/8	UC205-13	F206	1.1	UCF206-20	1-1/4																	UCF206		30																UCF207-20	1-1/4															UCF207-21	1-5/16															UCF207-22	1-3/18		117	92	19	16	34	14	3	55	44.4	42.9	17.5	M12	7/16	UC206-17	F207	1.6	UCF207-23	1-7/16																	UCF207		35																UCF208-24	1-1/2															UCF208-25	1-9/16		130	102	21	16	36	16	3	62	51.2	49.2	19	M14	1/2	UC207-20	F208	1.9	UCF208		40																UCF209-26	1-5/8															UCF209-27	1-11/16		137	105	22	18	38	16	3	63	52.2	49.2	19	M14	1/2	UC208-24	F209	2.4	UCF209-28	1-3/4																	UCF209		45																																																																																																																																																																																																																																																																																																																																																											
UCF206-18	1-1/8															UCF206-19	1-3/16		108	83	18	14	31	12	2	49	40.2	38.1	15.9	M10	3/8	UC205-13	F206	1.1	UCF206-20	1-1/4																	UCF206		30																UCF207-20	1-1/4																	UCF207-21	1-5/16															UCF207-22	1-3/18		117	92	19	16	34	14	3	55	44.4	42.9	17.5	M12	7/16	UC206-17	F207	1.6	UCF207-23	1-7/16																	UCF207		35																UCF208-24	1-1/2															UCF208-25	1-9/16		130	102	21	16	36	16	3	62	51.2	49.2	19	M14	1/2	UC207-20	F208	1.9	UCF208		40																UCF209-26	1-5/8															UCF209-27	1-11/16		137	105	22	18	38	16	3	63	52.2	49.2	19	M14	1/2	UC208-24	F209	2.4	UCF209-28	1-3/4																	UCF209		45																																																																																																																																																																																																																																																																																																																																																																											
UCF206-19	1-3/16		108	83	18	14	31	12	2	49	40.2	38.1	15.9	M10	3/8	UC205-13	F206	1.1																																																																																																																																																																																																																																																																																																																																																																																																																																																																																																																																																																																																																																					
UCF206-20	1-1/4															UCF206				30																UCF207-20	1-1/4																	UCF207-21	1-5/16															UCF207-22	1-3/18		117	92	19	16	34	14	3	55	44.4	42.9	17.5	M12	7/16	UC206-17	F207	1.6	UCF207-23	1-7/16															UCF207		35														UCF208-24			1-1/2															UCF208-25	1-9/16		130	102	21	16	36	16	3	62	51.2	49.2	19	M14	1/2	UC207-20	F208	1.9	UCF208		40														UCF209-26	1-5/8															UCF209-27	1-11/16		137	105	22	18	38	16	3	63	52.2	49.2	19	M14	1/2	UC208-24	F209	2.4	UCF209-28	1-3/4															UCF209		45																																																																																																																																																																																																																																																																																																																																																																																																																				
UCF206		30														UCF207-20			1-1/4																	UCF207-21	1-5/16															UCF207-22	1-3/18		117	92	19	16	34	14	3	55	44.4	42.9	17.5	M12	7/16	UC206-17	F207	1.6	UCF207-23	1-7/16																	UCF207		35														UCF208-24	1-1/2															UCF208-25	1-9/16		130	102	21	16	36	16	3	62	51.2	49.2	19	M14	1/2	UC207-20	F208	1.9	UCF208		40																UCF209-26	1-5/8															UCF209-27	1-11/16		137	105	22	18	38	16	3	63	52.2	49.2	19	M14	1/2	UC208-24	F209	2.4	UCF209-28	1-3/4																	UCF209		45																																																																																																																																																																																																																																																																																																																																																																																																																																		
UCF207-20	1-1/4															UCF207-21			1-5/16															UCF207-22	1-3/18		117	92	19	16	34	14	3	55	44.4	42.9	17.5	M12	7/16	UC206-17	F207	1.6	UCF207-23	1-7/16																	UCF207		35																UCF208-24	1-1/2															UCF208-25	1-9/16		130	102	21	16	36	16	3	62	51.2	49.2	19	M14	1/2	UC207-20	F208	1.9	UCF208		40																UCF209-26	1-5/8															UCF209-27	1-11/16		137	105	22	18	38	16	3	63	52.2	49.2	19	M14	1/2	UC208-24	F209	2.4	UCF209-28	1-3/4																	UCF209		45																																																																																																																																																																																																																																																																																																																																																																																																																																																		
UCF207-21	1-5/16															UCF207-22	1-3/18		117	92	19	16	34	14	3	55	44.4	42.9	17.5	M12	7/16	UC206-17	F207	1.6	UCF207-23	1-7/16																	UCF207		35																UCF208-24	1-1/2															UCF208-25	1-9/16		130	102	21	16	36	16	3	62	51.2	49.2	19	M14	1/2	UC207-20	F208	1.9	UCF208		40																UCF209-26	1-5/8															UCF209-27	1-11/16		137	105	22	18	38	16	3	63	52.2	49.2	19	M14	1/2	UC208-24	F209	2.4	UCF209-28	1-3/4																	UCF209		45																																																																																																																																																																																																																																																																																																																																																																																																																																																																				
UCF207-22	1-3/18		117	92	19	16	34	14	3	55	44.4	42.9	17.5	M12	7/16	UC206-17	F207	1.6																																																																																																																																																																																																																																																																																																																																																																																																																																																																																																																																																																																																																																					
UCF207-23	1-7/16															UCF207				35																UCF208-24	1-1/2															UCF208-25	1-9/16		130	102	21	16	36	16	3	62	51.2	49.2	19	M14	1/2	UC207-20	F208	1.9	UCF208		40														UCF209-26	1-5/8															UCF209-27	1-11/16		137	105	22	18	38	16	3	63	52.2	49.2	19	M14	1/2	UC208-24	F209	2.4	UCF209-28	1-3/4															UCF209		45																																																																																																																																																																																																																																																																																																																																																																																																																																																																																																											
UCF207		35														UCF208-24			1-1/2															UCF208-25	1-9/16		130	102	21	16	36	16	3	62	51.2	49.2	19	M14	1/2	UC207-20	F208	1.9	UCF208		40																UCF209-26	1-5/8															UCF209-27	1-11/16		137	105	22	18	38	16	3	63	52.2	49.2	19	M14	1/2	UC208-24	F209	2.4	UCF209-28	1-3/4																	UCF209		45																																																																																																																																																																																																																																																																																																																																																																																																																																																																																																																									
UCF208-24	1-1/2															UCF208-25	1-9/16		130	102	21	16	36	16	3	62	51.2	49.2	19	M14	1/2	UC207-20	F208	1.9	UCF208		40																UCF209-26	1-5/8															UCF209-27	1-11/16		137	105	22	18	38	16	3	63	52.2	49.2	19	M14	1/2	UC208-24	F209	2.4	UCF209-28	1-3/4																	UCF209		45																																																																																																																																																																																																																																																																																																																																																																																																																																																																																																																																											
UCF208-25	1-9/16		130	102	21	16	36	16	3	62	51.2	49.2	19	M14	1/2	UC207-20	F208	1.9																																																																																																																																																																																																																																																																																																																																																																																																																																																																																																																																																																																																																																					
UCF208		40														UCF209-26			1-5/8															UCF209-27	1-11/16		137	105	22	18	38	16	3	63	52.2	49.2	19	M14	1/2	UC208-24	F209	2.4	UCF209-28	1-3/4															UCF209		45																																																																																																																																																																																																																																																																																																																																																																																																																																																																																																																																																																																
UCF209-26	1-5/8															UCF209-27	1-11/16		137	105	22	18	38	16	3	63	52.2	49.2	19	M14	1/2	UC208-24	F209	2.4	UCF209-28	1-3/4																	UCF209		45																																																																																																																																																																																																																																																																																																																																																																																																																																																																																																																																																																																																
UCF209-27	1-11/16		137	105	22	18	38	16	3	63	52.2	49.2	19	M14	1/2	UC208-24	F209	2.4																																																																																																																																																																																																																																																																																																																																																																																																																																																																																																																																																																																																																																					
UCF209-28	1-3/4															UCF209				45																																																																																																																																																																																																																																																																																																																																																																																																																																																																																																																																																																																																																																			
UCF209		45																																																																																																																																																																																																																																																																																																																																																																																																																																																																																																																																																																																																																																																					

UCF2



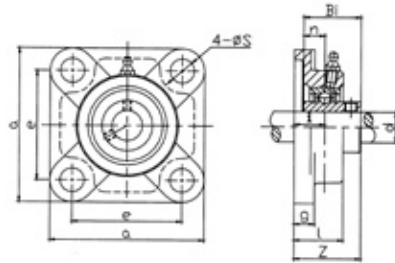
Unit No.	Shaft Dia d		Dimensions(mm)											Bolt Used		Bearing No.	Housing No.	Housing Weight (kg)
	(in)	(mm)	a	e	i	g	l	s	t	z1	z	Bi	n	(mm)	(in)			
UCF210-29	1-13/16		143	111	22	18	40	16	3	66.5	54.6	51.6	19	M14	1/2	UC210-29	F210	2.6
UCF210-30	1-7/8	UC210-30																
UCF210-31	1-15/16	UC210-31																
UCF210-32	2	UC210-32																
UCF210	50	UC210																
UCF211-32	2		162	130	25	20	43	19	4	71	58.4	55.6	22.2	M16	5/8	UC211-32	F211	3.5
UCF211-33	2-1/16	UC211-33																
UCF211-34	2-1/8	UC211-34																
UCF211-35	2-3/16	UC211-35																
UCF211	55	UC211																
UCF212-36	2-1/4		175	143	29	20	48	19	4	80	68.7	65.1	25.4	M16	5/8	UC212-36	F212	4.2
UCF212-37	2-5/16	UC212-37																
UCF212-38	2-3/8	UC212-38																
UCF212-39	2-7/16	UC212-39																
UCF212	60	UC212																
UCF213-40	2-1/2		187	149	30	20	50	19	4	83.5	69.7	65.1	25.4	M16	5/8	UC213-40	F213	5.3
UCF213-41	2-9/16	UC213-41																
UCF213	65	UC213																
UCF214-42	2-5/8		193	152	31	24	54	19			75.4	74.6	30.2	M16	5/8	UC214-42	F214	5.5
UCF214-43	2-11/16	UC214-43																
UCF214-44	2-3/4	UC214-44																
UCF214	70	UC214																
UCF215-45	2-13/16		200	159	34	24	56	19			78.5	77.8	33.3	M16	5/8	UC215-45	F215	6.2
UCF215-46	2-7/8	UC215-46																
UCF215-47	2-15/16	UC215-47																
UCF215-48	3	UC215-48																
UCF215	75	UC215																
UCF216-50	3-1/8		208	165	34	24	58	23			83.3	82.6	33.3	M20	3/4	UC216-50	F216	7.7
UCF216	80	UC216																
UCF217-52	3-1/4		220	175	36	26	63	23			87.6	85.7	34.1	M20	3/4	UC217-52	F217	9
UCF217	85	UC217																
UCF218-56	3-1/2		235	187	40	26	68	23			96.3	96	39.7	M20	3/4	UC218-56	F218	11.3
UCF218	90	UC218																

UCF3



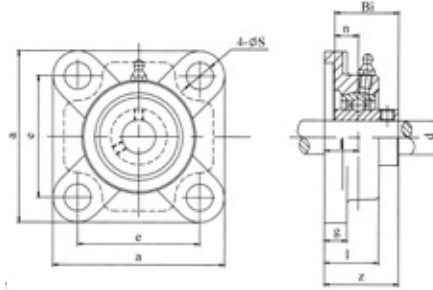
Unit No.	Shaft Dia d		Dimensions(mm)									Bolt Used		Bearing No.	Housing No.	Housing Weight (kg)
	(in)	(mm)	a	e	i	g	l	s	z	Bi	n	(mm)	(in)			
UCF305-14	7/8		110	80	16	13	29	16	39	38	15	M14	1/2	UC305-14	F305	0.9
UCF305-15	15/16													UC305-15		
UCF305-16	1													UC305-16		
UCF305		25												UC305		
UCF306-18	1-1/8		125	95	18	15	32	16	44	43	17	M14	1/2	UC306-18	F306	1.28
UCF306-19	1-3/16													UC306-19		
UCF306		30												UC306		
UCF307-20	1-1/4		135	100	20	16	36	19	49	48	19	M16	5/8	UC307-20	F307	1.57
UCF307-21	1-5/16													UC307-21		
UCF307-22	1-3/8													UC307-22		
UCF307-23	1-7/16													UC307-23		
UCF307		35												UC307		
UCF308-24	1-1/2		150	112	23	17	40	19	56	52	19	M16	5/8	UC308-24	F308	2
UCF308-25	1-9/16													UC308-25		
UCF308		40												UC308		
UCF309-26	1-5/8		160	125	25	18	44	19	60	57	22	M16	5/8	UC309-26	F309	2.6
UCF309-27	1-11/16													UC309-27		
UCF309-28	1-3/4													UC309-28		
UCF309		45												UC309		
UCF310-30	1-7/8		175	132	28	19	48	23	67	61	22	M20	3/4	UC310-30	F310	2.68
UCF310-31	1-15/16													UC310-31		
UCF310		50												UC310		
UCF311-32	2		185	140	30	20	52	23	71	66	25	M20	3/4	UC311-32	F311	3.3
UCF311-34	2-1/8													UC311-34		
UCF311-35	2-3/16													UC311-35		
UCF311		55												UC311		

UCF3



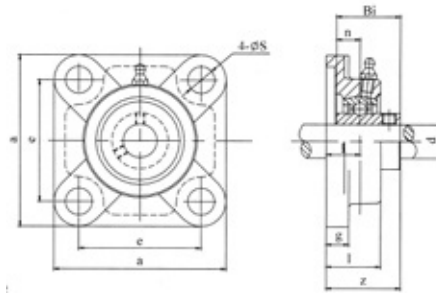
Unit No.	Shaft Dia d		Dimensions(mm)									Bolt Used		Bearing No.	Housing No.	Housing Weight (kg)
	(in)	(mm)	a	e	i	g	l	s	z	Bi	n	(mm)	(in)			
UCF312-36	2-1/4		195	150	33	22	56	23	78	71	26	M20	3/4	UC312-36	F312	4.1
UCF312-38	2-3/8													UC312-38		
UCF312-39	2-7/16													UC312-39		
UCF312		60												UC312		
UCF313-40	2-1/2		208	166	33	22	58	23	78	75	30	M20	3/4	UC313-40	F313	4.9
UCF313		65												UC313		
UCF314-44	2-3/4		226	178	36	25	61	25	81	78	33	M22	7/8	UC314-44	F314	5.6
UCF314		70												UC314		
UCF315-48	3		236	184	39	25	66	25	89	82	32	M22	7/8	UC315-48	F315	7
UCF315		75												UC315		
UCF316-50	3-1/8		250	196	38	27	68	31	90	86	34	M27	1	UC316-50	F316	9
UCF316		80												UC316		
UCF317-52	3-1/4		260	204	44	27	74	31	100	96	40	M27	1	UC317-52	F317	10.5
UCF317		85												UC317		
UCF318-56	3-1/2		280	216	44	30	76	35	100	96	40	M30	1-1/8	UC318-56	F318	12.8
UCF318		90												UC318		
UCF319-60	3-3/4		290	228	59	30	94	35	121	103	41	M30	1-1/8	UC319-60	F319	13.8
UCF319		95												UC319		
UCF320-64	4		310	242	59	32	94	38	125	108	42	M33	1-1/4	UC320-64	F320	15.2
UCF320		100												UC320		
UCF321		105	310	242	59	32	94	38	127	112	44	M33	1-1/4	UC321	F321	15
UCF322		110	340	266	60	35	96	41	131	117	46	M36	1-3/8	UC322	F322	21.8
UCF324		120	370	290	65	40	110	41	140	126	51	M36	1-3/8	UC324	F324	25.2
UCF326		130	410	320	65	45	115	41	146	135	54	M36	1-3/8	UC326	F326	37
UCF328		140	450	350	75	55	125	41	161	145	59	M36	1-3/8	UC328	F328	57.8

UCFX



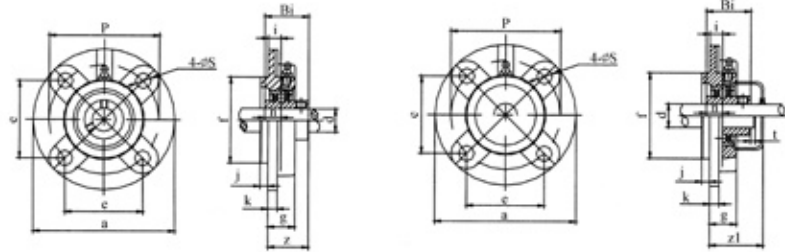
Unit No.	Shaft Dia d		Dimensions(mm)									Bolt Used		Bearing No.	Housing No.	Housing Weight (kg)
	(in)	(mm)	a	e	i	g	l	s	z	Bi	n	(mm)	(in)			
UCFX05-16	1		108	83	18	13	30	12	40.2	38.1	15.9	M10	3/8	UCX05-16	FX05	1.02
UCFX05		25												UCX05		
UCFX06-19	1-3/16		117	92	19	14.3	34	16	44.4	49.2	17.5	M14	1/2	UCX06-19	FX06	1.46
UCFX06-20	1-1/4													UCX06-20		
UCFX06		30												UCX06		
UCFX07-22	1-3/8		130	102	21	14.3	38	16	51.2	49.2	19	M14	1/2	UCX07-22	FX07	1.94
UCFX07-23	1-7/16													UCXX07-23		
UCFX07		35												UCX07		
UCFX08-24	1-1/2		137	105	22	14.3	40	19	52.2	49.2	19	M16	5/8	UCX08-24	FX08	2.2
UCFX08		40												UCX08		
UCFX09-26	1-5/8		143	111	23	14.3	40	19	55.6	51.6	19	M16	5/8	UCX09-26	FX09	2.42
UCFX09-27	1-11/16													UCX09-27		
UCFX09-28	1-3/4													UCX 09-28		
UCFX09		45												UCX09		
UCFX10-31	1-15/16		162	130	26	20	44	19	59.4	55.6	22.2	M16	5/8	UCX10-31	FX10	3.41
UCFX10-32	2													UCX 10-32		
UCFX10		50												UCX10		
UCFX11-35	2-3/16		175	143	29	20	49	19	68.7	65.1	25.4	M16	5/8	UCX11-35	FX11	4.52
UCFX11-36	2-1/4													UCX 11-36		
UCFX11		55												UCX11		

UCFX



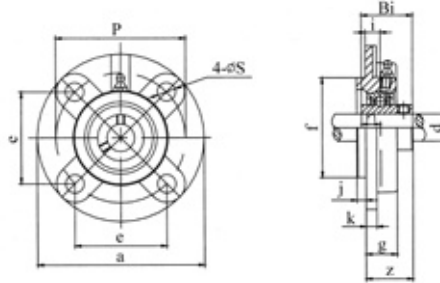
Unit No.	Shaft Dia d		Dimensions(mm)									Bolt Used		Bearing No.	Housing No.	Housing Weight (kg)
	(in)	(mm)	a	e	i	g	l	s	z	Bi	n	(mm)	(in)			
UCFX12-38	2-3/8		187	149	34	21	59	19	73.7	65.1	25.4	M16	5/8	UCX12-38	FX12	5.32
UCFX12-39	2-7/16													UCX 12-39		
UCFX12		60												UCX12		
UCFX13-40	2-1/2		187	149	34	21	59	19	78.4	74.6	30.2	M16	5/8	UCX13-40	FX13	5.53
UCFX13		65												UCX13		
UCFX14-44	2-3/4		197	152	37	24	60	23	81.5	77.8	33.3	M20	3/4	UCX14-44	FX14	6.77
UCFX14		70												UCX14		
UCFX15-47	2-15/16		197	152	40	24	68	23	89.3	826	33.3	M20	3/4	UCX15-47	FX15	7.82
UCFX15-48	3													UCX15-48		
UCFX15		75												UCX15		
UCFX16-50	3-1/8		214	171	40	24	70	23	91.6	85.7	34.1	M20	3/4	UCX16-50	FX16	8.91
UCFX16		80												UCX16		
UCFX17-55	3-7/16		214	171	40	24	70	23	96.3	96	39.7	M20	3/4	UCX17-55	FX17	10.23
UCFX17		85												UCX17		
UCFX18-56	3-1/2		214	171	45	24	76	23	106.1	104	42.9	M20	3/4	UCX18-56	FX18	11.69
UCFX18		90												UCX18		
UCFX20-63	3-15/16		268	211	59	31	97	31	127.3	117.5	49.2	M27	1-1/8	UCX20-63	FX20	19.44
UCFX20-64	4													UCX20-64		
UCFX20		100												UCX20		

UCFC



Unit No.	Shaft Dia d		Dimensions(mm)														Bolt Used		Bearing No.	Housing No.	Housing Weight (kg)
	(in)	(mm)	a	p	e	i	s	j	k	g	f	t	z1	z	Bi	n	mm	in			
UCFC201-8	1/2		100	78	55.1	10	12	5	7	20.5	62	2	35.5	28.3	31	12.7	M10	3/8	UC201-8	FC204	0.55
UCFC202-9	9/16																		UC202-9		
UCFC202-10	5/8																		UC202-10		
UCFC203-11	11/16																		UC203-11		
UCFC 204-12	3/4																		UC204-12		
UCFC201		12																UC201			
UCFC202		15																	UC202		
UCFC203		17																	UC203		
UCFC204		20																	UC 204		
UCFC205-13	13/16		115	90	63.6	10	12	6	7	21	70	2	38.5	29.7	34.1	14.3	M10	3/8	UC205-13	FC205	0.8
UCFC205-14	7/8																		UC205-14		
UCFC205-15	15/16																		UC205-15		
UCFC205-16	1																		UC205-16		
UCFC205		25																	UC205		
UCFC206-17	1-1/16		125	100	70.7	10	12	8	8	23	80	2	41	32.2	38.1	15.9	M10	3/8	UC206-17	FC206	1
UCFC206-18	1-1/8																		UC206-18		
UCFC206-19	1-3/16																		UC206-19		
UCFC206-20	1-1/4																		UC206-20		
UCFC206		30																	UC206		
UCFC207-20	1-1/4		135	110	77.8	11	14	8	9	26	90	3	47	36.4	42.9	17.5	M12	7/16	UC207-20	FC207	1.2
UCFC207-21	1-5/16																		UC207-21		
UCFC207-22	1-3/8																		UC207-22		
UCFC207-23	1-7/16																		UC207-23		
UCFC207		35																	UC207		
UCFC208-24	1-1/2		145	120	84.8	11	14	10	9	26	100	3	52	41.2	49.2	19	M12	7/16	UC208-24	FC208	1.45
UCFC208-25	1-9/16																		UC208-25		
UCFC208		40																	UC208		
UCFC209-26	1-5/8		160	132	93.3	10	16	12	14	26	105	3	51	40.2	49.2	19	M14	1/2	UC209-26	FC209	2.1
UCFC209-27	1-11/16																		UC209-27		
UCFC209-28	1-3/4																		UC209-28		
UCFC209		45																	UC209		
UCFC210-29	1-13/16		165	138	97.6	10	16	12	14	28	110	4	53.5	42.6	51.6	19	M14	1/2	UC210-29	FC210	2.1
UCFC 210-30	1-7/8																		UC210-30		
UCFC210-31	1-15/16																		UC210-31		
UCFC210-32	2																		UC210-32		
UCFC210		50																	UC210		

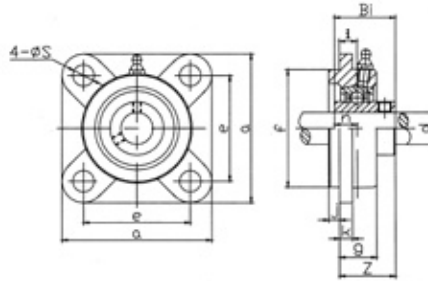
UCFCX



Unit No.	Shaft Dia d		Dimensions(mm)													Bolt Used		Bearing No.	Housing No.	Housing Weight (kg)
	(in)	(mm)	a	p	e	i	s	j	k	g	f	z	Bi	n	(mm)	(in)				
UCFCX05-16	1		111	92	65	10	9.5	6	9.5	24	76	32.2	38.1	15.9	M8	5/16	UCX05-16	FCX05	1.1	
UCFCX05		25															UCX05			
UCFCX06-19	1-3/16		127	105	74.2	8	12	9.5	9.5	22.5	85	33.4	42.9	17.5	M10	3/8	UCX06-19	FCX06	1.4	
UCFCX06-20	1-1/4																UCX06-20			
UCFCX06		30	UCX06																	
UCFCX07-22	1-3/8		133	111	78.5	9	12	11	11	26	92	39.2	49.2	19	M10	3/8	UCX07-22	FCX07	1.8	
UCFCX07-23	1-7/16																UCX07-23			
UCFCX07		35	UCX07																	
UCFCX08-24	1-1/2		133	111	78.5	9	12	11	11	26	92	39.2	49.2	19	M10	3/8	UCX08-24	FCX08	1.8	
UCFCX08		40															UCX08			
UCFCX09-26	1-5/8		155	130	91.9	8	14	12	11	25	108	40.6	51.6	19	M12	7/16	UCX09-26	FCX09	2.5	
UCFCX09-27	1-11/16																UCX09-27			
UCFCX09-28	1-3/4																UCX09-28			
UCFCX09		45															UCX09			
UCFCX10-31	1-15/16		162	136	96.2	7	14	16	11	25	118	40.4	55.6	22.2	M12	7/16	UCX10-31	FCX10	3	
UCFCX10-32	2																UCX10-32			
UCFCX10		50															UCX10			
UCFCX11-35	2-3/16		180	152	108	4	16	22	13	26	127	43.7	65.1	25.4	M14	1/2	UCX11-35	FCX11	4.1	
UCFCX11-36	2-1/4																UCX11-36			
UCFCX11		55															UCX11			
UCFCX12-38	2-3/8		194	165	117	11	16	20	14	33	140	50.7	75.1	25.4	M14	1/2	UCX12-38	FCX12	4.7	
UCFCX12-39	2-7/16																UCX12-39			
UCFCX12		60															UCX12			
UCFCX13-40	2-1/2		194	165	117	11	16	20	14	33	140	55.4	74.6	30.2	M14	1/2	UCX13-40	FCX13	5	
UCFCX13		65															UCX13			
UCFCX14-44	2-3/4		222	190	134	14	19	20	14	36	164	58.5	77.8	33.3	M16	5/8	UCX14-44	FCX14	7.4	
UCFCX14		70															UCX14			
UCFCX15-47	2-15/16		222	190	134	12	19	22	16	35	164	61.3	82.6	33.3	M16	5/8	UCX15-47	FCX15	7.5	
UCFCX15-48	3																UCX15-48			
UCFCX15		75															UCX15			
UCFCX16-50	3-1/4		260	219	155	10	23	25	19	36	186	61.6	85.7	34.1	M20	3/4	UCX16-50	FCX16	11.7	
UCFCX16		80															UCX16			
UCFCX17-55	3-7/16		260	219	155	10	23	25	19	36	186	66.3	96	39.7	M20	3/4	UCX17-55	FCX17	11.3	
UCFCX17		85															UCX17			
UCFCX18		90	260	219	155	12	23	28	19	43	186	73.1	104	42.9	M20	3/4	UCX18	FCX18	11.4	
UCFCX20		100	276	238	168	22	23	28	22	66	206	90.3	118	49.2	M20	3/4	UCX20	FCX20	16.1	

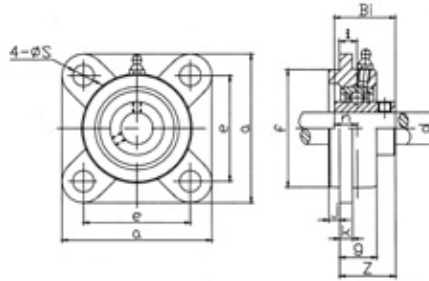


UCFS3



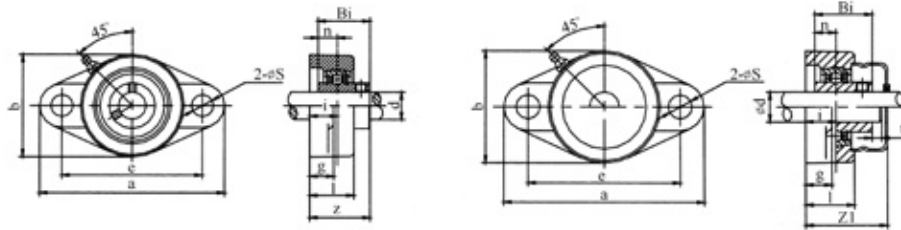
Unit No.	Shaft Dia d		Dimensions(mm)											Bolt Used		Bearing No.	Housing No.	Housing Weight (kg)
	(in)	(mm)	a	e	i	s	j	k	g	f	z	Bi	n	(mm)	(in)			
UCFS305-14	7/8		110	80	9	16	7	13	22	80	32	38	15	M14	1/2	UC305-14	FS305	0.82
UCFS305-15	15/16															UC305-15		
UCFS305-16	1															UC305-16		
UCFS305		25														UC305		
UCFS306-18	1-1/8		125	95	10	16	8	15	24	90	36	43	17	M14	1/2	UC306-18	FS306	1.15
UCFS306-19	1-3/16															UC306-19		
UCFS306		30														UC306		
UCFS307-20	1-1/4		135	100	11	19	9	16	27	100	40	48	19	M16	5/8	UC307-20	FS307	1.45
UCFS307-21	1-5/16															UC307-21		
UCFS307-22	1-3/8															UC307-22		
UCFS307-23	1-7/16															UC307-23		
UCFS307		35														UC307		
UCFS308-24	1-1/2		150	112	13	19	10	17	30	115	46	52	19	M16	5/8	UC308-24	FS308	2
UCFS308-25	1-9/16															UC308-25		
UCFS308		40														UC308		
UCFS309-26	1-5/8		160	125	14	19	11	18	33	125	49	57	22	M16	5/8	UC309-26	FS309	2.35
UCFS309-27	1-11/16															UC309-27		
UCFS309-28	1-3/4															UC309-28		
UCFS309		45														UC309		
UCFS310-30	1-7/8		175	132	16	23	12	19	36	140	55	61	22	M20	3/4	UC310-30	FS310	3.15
UCFS310-31	1-15/16															UC310-31		
UCFS310		50														UC310		
UCFS311-32	2		185	140	17	23	13	20	39	150	58	66	25	M20	3/4	UC311-32	FS311	3.6
UCFS311-34	2-1/8															UC311-33		
UCFS311-35	2-3/16															UC311-35		
UCFS311		55														UC311		

UCFS3



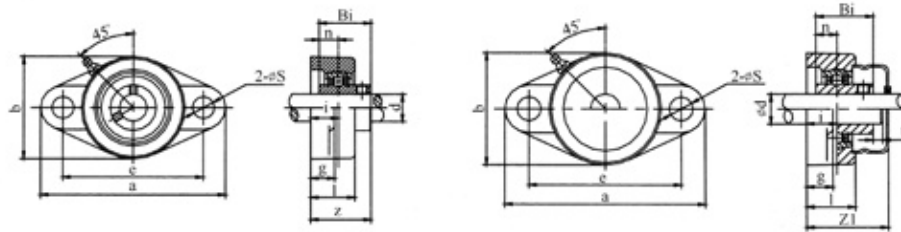
Unit No.	Shaft Dia d		Dimensions(mm)											Bolt Used		Bearing No.	Housing No.	Housing Weight (kg)
	(in)	(mm)	a	e	i	s	j	k	g	f	z	Bi	n	(mm)	(in)			
UCFS312-36	2-1/4		195	150	19	23	14	22	42	160	64	71	26	M20	3/4	UC312-36	FS312	4.2
UCFS312-38	2-3/8															UC312-38		
UCFS312-39	2-7/16															UC312-39		
UCFS312		60														UC312		
UCFS313-40	2-1/2		208	166	15	23	18	22	40	175	60	75	30	M20	3/4	UC313-40	FS313	5
UCFS313		65														UC313		
UCFS314-44	2-3/4		226	178	18	25	18	25	43	185	63	78	33	M22	7/8	UC314-44	FS314	6.3
UCFS314		70														UC314		
UCFS315-48	3		236	184	21	25	18	25	48	200	71	82	32	M22	7/8	UC315-48	FS315	7.4
UCFS315		75														UC315		
UCFS316-50	3-1/8		250	196	18	31	20	27	48	210	70	86	34	M27	1	UC316-50	FS316	8.5
UCFS316		80														UC316		
UCFS317-52	3-1/4		260	204	24	31	20	27	54	220	80	96	40	M27	1	UC317-52	FS317	9.2
UCFS317		85														UC317		
UCFS318-56	3-1/2		280	216	24	35	20	30	56	240	80	96	40	M30	1-1/8	UC318-56	FS318	12.5
UCFS318		90														UC318		
UCFS319-60	3-3/4		290	228	39	35	20	30	74	250	101	103	41	M30	1-1/8	UC319-60	FS319	14.5
UCFS319		95														UC319		
UCFS320-64	4		310	242	39	38	20	32	74	260	105	108	42	M33	1-1/4	UC320-64	FS320	17
UCFS320		100														UC320		
UCFS321		105	310	242	39	38	20	32	74	260	107	112	44	M33	1-1/4	UC321	FS321	14
UCFS322		110	340	266	35	41	25	35	71	300	106	117	46	M36		UC322	FS322	21.5
UCFS324		120	370	290	35	41	30	40	80	330	110	126	51	M36		UC324	FS324	30
UCFS326		130	410	320	35	41	30	45	85	360	116	135	54	M36		UC326	FS326	41.5
UCFS328		140	450	350	45	41	30	55	95	400	131	145	59	M36		UC328	FS328	61.5

UCFL2



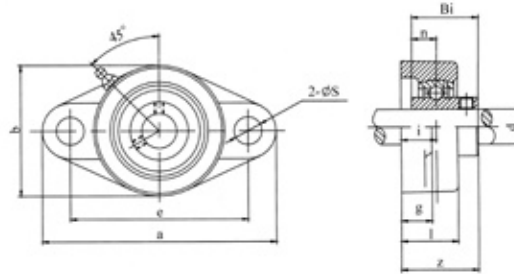
Bearing Unit No.	Shaft Dia d		Dimensions(mm)												Bolt Used		Bearing No.	Housing No.	Housing Weight (kg)
	(in)	(mm)	a	e	i	g	l	s	b	t	z1	z	Bi	n	(mm)	(in)			
UCFL201-8	1/2		99	76.5	15	13	25.5	11.5	57			31	26	10	M10	3/8	UCW201-8	FL203	0.25
UCFL202-9	9/16	UCW202-9																	
UCFL202-10	5/8	UCW202-10																	
UCFL203-11	11/16	UCW203-11																	
UCFL201	12	UCW201																	
UCFL202	15	UCW202																	
UCFL203	17	UCW203																	
UCFL201-8	1/2		113	90	15	12	25.5	12	60	2	40.5	33.3	31	12.7	M10	3/8	UC201-8	FL204	0.28
UCFL202-9	9/16	UC202-9																	
UCFL202-10	5/8	UC202-10																	
UCFL203-11	11/16	UC203-11																	
UCFL204-12	3/4	UC204-12																	
UCFL201	12	UC201																	
UCFL202	15	UC202																	
UCFL203	17	UC203																	
UCFL204	20	UC204																	
UCFL205-13	13/16		130	99	16	14	27	16	68	2	44.5	35.7	34.1	14.3	M14	1/2	UC205-13	FL205	0.4
UCFL205-14	7/8	UC205-14																	
UCFL205-15	15/16	UC205-15																	
UCFL205-16	1	UC205-16																	
UCFL205	25	UC205																	
UCFL206-17	1-1/16		148	117	18	14	31	16	80	2	49	40.2	38.1	15.9	M14	1/2	UC206-17	FL206	0.54
UCFL206-18	1-1/8	UC206-18																	
UCFL206-19	1-3/16	UC206-19																	
UCFL206-20	1-1/4	UC206-20																	
UCFL206	30	UC206																	
UCFL207-20	1-1/4		161	130	19	16	34	16	90	3	55	44.4	42.9	17.5	M14	1/2	UC207-20	FL207	0.65
UCFL207-21	1-5/16	UC207-21																	
UCFL207-22	1-3/8	UC207-22																	
UCFL207-23	1-7/16	UC207-23																	
UCFL207	35	UC207																	
UCFL208-24	1-1/2		175	144	21	16	36	16	100	3	62	51.2	49.2	19	M14	1/2	UC208-24	FL208	0.8
UCFL208-25	1-9/16	UC208-25																	
UCFL208	40	UC208																	
UCFL209-26	1-5/8		188	148	22	18	38	19	108	3	63	52.2	49.2	19	M16	5/8	UC209-26	FL209	1.15
UCFL209-27	1-11/16	UC209-27																	
UCFL209-28	1-3/4	UC209-28																	
UCFL209	45	UC209																	

UCFL2



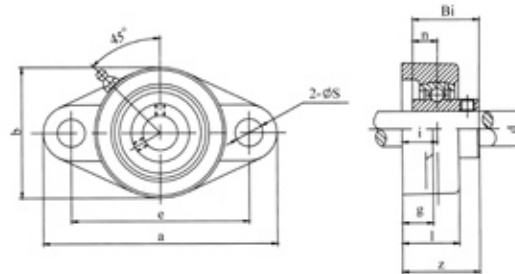
Bearing Unit No.	Shaft Dia d		Dimensions(mm)												Bolt Used		Bearing No.	Housing No.	Housing Weight (kg)
	(in)	(mm)	a	e	i	g	l	s	b	t	zl	z	Bi	n	(mm)	(in)			
UCFL210-29	1-13/16																UC210-29	FL210	1.25
UCFL210-30	1-7/8																UC210-30		
UCFL210-31	1-15/16		197	157	22	18	40	19	115	3	66.5	54.6	51.6	19	M16	5/8	UC210-31		
UCFL210-32	2																UC210-32		
UCFL210		50															UC210		
UCFL211-32	2																UC211-32	FL211	1.85
UCFL211-33	2-1/16																UC211-33		
UCFL211-34	2-1/8		224	184	25	20	43	19	130	4	71	58.4	55.6	22.2	M16	5/8	UC211-34		
UCFL211-35	2-3/16																UC211-35		
UCFL211		55															UC211		
UCFL212-36	2-1/4																UC212-36	FL212	2.1
UCFL212-37	2-5/16																UC212-37		
UCFL212-38	2-3/8		250	202	29	20	48	23	140	4	80	68.7	65.1	25.4	M20	3/4	UC212-38		
UCFL212-39	2-7/16																UC212-39		
UCFL212		60															UC212		
UCFL213-40	2-1/2																UC213-40	FL213	2.8
UCFL213-41	2-9/16		258	210	30	24	50	23	155	4	83.5	69.7	65.1	25.4	M20	3/4	UC213-41		
UCFL213		65															UC213		
UCFL214-42	2-5/8																UC214-42	FL214	3.2
UCFL214-43	2-11/16		265	216	31	24	54	23	160			75.4	74.6	30.2	M20	3/4	UC214-43		
UCFL214-44	2-3/4																UC214-44		
UCFL214		70															UC214		
UCFL215-45	2-13/16																UC215-45	FL215	2.8
UCFL215-46	2-7/8																UC215-46		
UCFL215-47	2-15/16		275	225	34	24	56	23	165			78.5	77.8	33.3	M20	3/4	UC215-47		
UCFL215-48	3																UC215-48		
UCFL215		75															UC215		
UCFL216-50	3-1/8																UC216-50	FL216	3.53
UCFL216		80	290	233	34	24	58	25	180			83.3	82.6	33.3	M22	7/8	UC216		
UCFL217-52	3-1/4																UC217-52	FL217	5.5
UCFL217		85	305	248	36	26	63	25	190			87.6	85.7	34.1	M22	7/8	UC217		
UCFL218-56	3-1/2																UC218-56	FL218	6
UCFL218		90	320	265	40	26	68	25	205			96.3	96	39.7	M22	7/8	UC218		

UCFL3



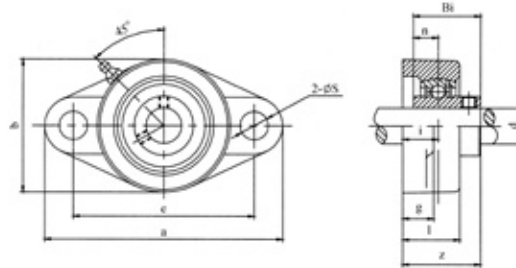
Unit No.	Shaft Dia d		Dimensions(mm)										Bolt Used		Bearing No.	Housing No.	Weight (kg)
	(in)	(mm)	a	e	i	g	l	s	b	z	Bi	n	(mm)	(in)			
UCFL305-14	7/8		150	113	16	13	29	19	80	39	38	15	M16	5/8	UC305-14	FL305	1.2
UCFL305-15	15/16														UC305-15		
UCFL305-16	1														UC305-16		
UCFL305		25													UC305		
UCFL306-18	1-1/8		180	134	18	15	32	23	90	44	43	17	M20	3/4	UC306-18	FL306	1.7
UCFL306-19	1-3/16														UC306-19		
UCFL306		30													UC306		
UCFL307-20	1-1/4		185	141	20	16	36	23	100	49	48	19	M20	3/4	UC307-20	FL307	2.2
UCFL307-21	1-5/16														UC307-21		
UCFL307-22	1-3/8														UC307-22		
UCFL307-23	1-7/16														UC307-23		
UCFL307		35													UC307		
UCFL308-24	1-1/2		200	158	23	17	40	23	112	56	52	19	M20	3/4	UC308-24	FL308	2.9
UCFL308-25	1-9/16														UC308-25		
UCFL308		40													UC308		
UCFL309-26	1-5/8		230	177	25	18	44	25	125	60	57	22	M22	7/8	UC309-26	FL309	3.6
UCFL309-27	1-11/16														UC309-27		
UCFL309-28	1-3/4														UC309-28		
UCFL309		45													UC309		
UCFL310-30	1-7/8		240	187	28	19	48	25	140	67	61	22	M22	7/8	UC310-30	FL310	4.7
UCFL310-31	1-15/16														UC310-31		
UCFL310		50													UC310		
UCFL311-32	2		250	198	30	20	52	25	150	71	66	25	M22	7/8	UC311-32	FL311	5.7
UCFL311-34	2-1/8														UC311-34		
UCFL311-35	2-3/16														UC311-35		
UCFL311		55													UC311		

UCFL3



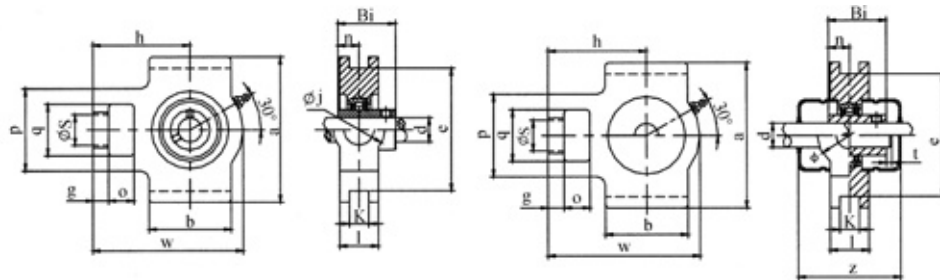
Unit No.	Shaft Dia d		Dimensions(mm)										Bolt Used		Bearing No.	Housing No.	Weight (kg)
	(in)	(mm)	a	e	i	g	l	s	b	z	Bi	n	(mm)	(in)			
UCFL312-36	2-1/4		270	212	33	22	56	31	160	78	71	26	M27	1	UC312-36	FL312	6.8
UCFL312-38	2-3/8														UC312-38		
UCFL312-39	2-7/16														UC312-39		
UCFL312		60													UC312		
UCFL313-40	2-1/2		295	240	33	25	58	31	175	78	75	30	M27	1	UC313-40	FL313	7.8
UCFL313		65													UC313		
UCFL314-44	2-3/4		315	250	36	28	61	35	185	81	78	33	M30	1-1/8	UC314-44	FL314	10
UCFL314		70													UC314		
UCFL315-48	3		320	260	39	30	66	35	195	89	82	32	M30	1-1/8	UC315-48	FL315	12
UCFL315		75													UC315		
UCFL316-50	3-1/8		355	285	38	32	68	38	210	90	86	34	M33	1-1/4	UC316-50	FL316	13.7
UCFL316		80													UC316		
UCFL317-52	3-1/4		370	300	44	32	74	38	220	100	96	40	M33	1-1/4	UC317-52	FL317	15.4
UCFL317		85													UC317		
UCFL318-56	3-1/2		385	315	44	36	76	38	235	100	96	40	M33	1-1/4	UC318-56	FL318	19
UCFL318		90													UC318		
UCFL319-60	3-3/4		405	330	59	40	94	41	250	121	103	41	M36		UC319-60	FL319	20.6
UCFL319		95												UC319			
UCFL320-64	4		440	360	59	40	94	44	270	125	108	42	M39		UC320-64	FL320	25.7
UCFL320		100												UC320			
UCFL321		105	440	360	59	40	94	44	270	127	112	44	M39		UC321	FL321	27
UCFL322		110	470	390	60	42	96	44	300	131	117	46	M39		UC322	FL322	38
UCFL324		120	520	430	65	48	110	47	330	140	126	51	M42		UC324	FL324	43.67
UCFL326		130	550	460	65	50	115	47	360	146	135	54	M42		UC326	FL326	61.3
UCFL328		140	600	500	75	60	125	51	400	161	145	59	M45		UC328	FL328	90

UCFLX



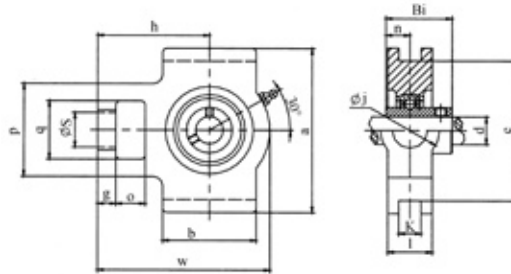
Unit No.	Shaft Dia d		Dimensions(mm)										Bolt Used		Bearing No.	Housing No.	Housing Weight (kg)
	(in)	(mm)	a	e	i	g	l	s	b	z	Bi	n	(mm)	(in)			
UCFLX05-13	13/16		141	117	18	13	30	12	83	40.2	38.1	15.9	M10	3/8	UCX05-13	FLX05	0.61
UCFLX05-14	7/8	UCX05-14															
UCFLX05-15	15/16	UCX05-15															
UCFLX05-16	1	UCX05-16															
UCFLX05	25	UCX05															
UCFLX06-17	1-1/16		156	130	19	14	34	16	95	44.4	42.9	17.5	M14	1/2	UCX06-17	FLX06	0.82
UCFLX06-18	1-1/8	UCX06-18															
UCFLX06-19	1-3/16	UCX06-19															
UCFLX06-20	1-1/4	UCX06-20															
UCFLX06	30	UCX06															
UCFLX07-20	1-1/4		171	144	21	14	38	16	105	51.2	49.2	19	M14	1/2	UCX07-20	FLX07	1.31
UCFLX07-21	1-5/16	UCX07-21															
UCFLX07-22	1-3/8	UCX07-22															
UCFLX07-23	1-7/16	UCX07-23															
UCFLX07	35	UCX07															
UCFLX08-24	1-1/2		179	148	22	14	40	16	111	52.2	49.2	19	M14	1/2	UCX08-24	FLX08	1.27
UCFLX08-25	1-9/16	UCX08-25															
UCFLX08	40	UCX08															
UCFLX09-26	1-5/8		189	157	23	14	40	16	116	55.6	51.6	19	M14	1/2	UCX09-26	FLX09	1.4
UCFLX09-27	1-11/16	UCX09-27															
UCFLX09-28	1-3/4	UCX09-28															
UCFLX09	45	UCX09															
UCFLX10-29	1-13/16		216	184	26	20	44	19	133	59.4	55.6	22.2	M16	5/8	UCX10-29	FLX10	2.05
UCFLX10-30	1-7/8	UCX10-30															
UCFLX10-31	1-15/16	UCX10-31															
UCFLX10-32	2	UCX10-32															
UCFLX10	50	UCX10															

UCT2



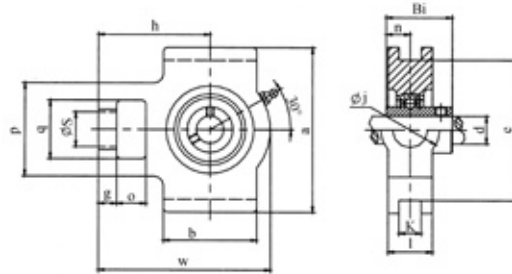
Unit No.	Shaft Dia d		Dimensions(mm)																	Bearing No.	Housing No.	Housing Weight (kg)	
	(in)	(mm)	o	g	p	q	s	b	k	e	a	w	j	l	h	t	z	Bi	n				
UCT211-32	2																				UC211-32	T211	2.8
UCT211-33	2-1/16																				UC211-33		
UCT211-34	2-1/8		25	19	102	64	35	95	22	130	146	171	64	38	106	4	92	55.6	22.2	UC211-34			
UCT211-35	2-3/16																				UC211-35		
UCT211		55																			UC211		
UCT212-36	2-1/4																				UC212-36	T212	3.4
UCT212-37	2-5/16																				UC212-37		
UCT212-38	2-3/8		32	19	102	64	35	102	22	130	146	194	64	42	119	4	102	65.1	25.4	UC212-38			
UCT212-39	2-7/16																				UC212-39		
UCT212		60																			UC212		
UCT213-40	2-1/2																				UC213-40	T213	5
UCT213-41	2-9/16		32	21	111	70	41	121	26	151	167	224	70	44	137	4	107	65.1	25.4	UC213-41			
UCT213		65																			UC213		
UCT214-42	2-3/8																				UC214-42	T214	4.7
UCT214-43	2-11/16		32	21	111	70	41	121	26	151	167	224	70	46	137			74.6	30.2	UC214-43			
UCT214-44	2-3/4																				UC214-44		
UCT214		70																			UC214		
UCT215-45	2-13/16																				UC215-45	T215	5.1
UCT215-46	2-7/8																				UC215-46		
UCT215-47	2-15/16		32	21	111	70	41	121	26	151	167	232	70	48	140			77.8	33.3	UC215-47			
UCT215-48	3																				UC215-48		
UCT215		75																			UC215		
UCT216-50	3-1/8																				UC216-50	T216	5.5
UCT216		80	32	21	111	70	41	121	26	165	184	235	70	51	140			82.6	33.3	UC216			
UCT217-52	3-1/4																				UC217-52	T217	7.4
UCT217		85	38	29	124	73	48	157	30	173	198	260	73	54	162			85.7	34.1	UC217			
UCT218-56	3-1/2																				UC218-56	T218	10.2
UCT218		90	40	30	130	80	48	140	30	190	215	275	80	55	170			96	39.7	UC218			

UCT3



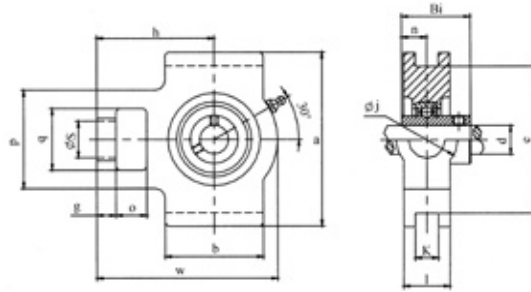
Unit No.	Shaft Dia d		Dimensions(mm)														Bearing No.	Housing No.	Housing Weight (kg)	
	(in)	(mm)	o	g	p	q	s	b	k	e	a	w	j	l	h	Bi				n
UCT305-14	7/8		16	12	62	36	26	65	12	80	89	122	36	26	76	38	15	UC305-14	T305	1.05
UCT305-15	15/16																	UC305-15		
UCT305-16	1																	UC305-16		
UCT305		25																UC305		
UCT306-18	1-1/8		18	14	70	41	28	74	16	90	100	137	41	28	85	43	17	UC306-18	T306	1.24
UCT306-19	1-3/16																	UC306-19		
UCT306		30																UC306		
UCT307-20	1-1/4		20	15	75	45	30	80	16	100	111	150	45	32	94	48	19	UC307-20	T307	1.69
UCT307-21	1-5/16																	UC307-21		
UCT307-22	1-3/8																	UC307-22		
UCT307-23	1-7/16																	UC307-23		
UCT307		35																UC307		
UCT308-24	1-1/2		22	17	83	50	32	89	18	112	124	162	50	34	100	52	19	UC308-24	T308	2.04
UCT308-25	1-9/16																	UC308-25		
UCT308		40																UC308		
UCT309-26	1-5/8		24	18	90	55	34	97	18	125	138	178	55	38	110	57	22	UC309-26	T309	2.72
UCT309-27	1-11/16																	UC309-27		
UCT309-28	1-3/4																	UC309-28		
UCT309		45																UC309		
UCT310-30	1-7/8		27	20	98	61	37	106	20	140	151	191	61	40	117	61	22	UC310-30	T310	3.35
UCT310-31	1-15/16																	UC310-31		
UCT310		50																UC310		
UCT311-32	2		29	21	105	66	39	115	22	150	163	207	66	44	127	66	25	UC311-32	T311	4.33
UCT311-34	2-1/8																	UC311-34		
UCT311-35	2-3/16																	UC311-35		
UCT311		55																UC311		

UCT3



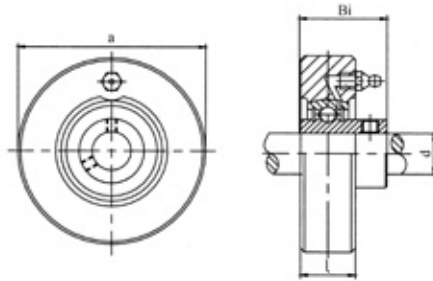
Unit No.	Shaft Dia d		Dimensions(mm)														Bearing No.	Housing No.	Housing Weight (kg)	
	(in)	(mm)	o	g	p	q	s	b	k	e	a	w	j	l	h	Bi				n
UCT312-36	2-1/4		31	23	113	71	41	123	22	160	178	220	71	46	135	71	26	UC312-36	T312	5
UCT312-38	2-3/8																	UC312-38		
UCT312-39	2-7/16																	UC312-39		
UCT312		60																UC312		
UCT313-40	2-1/2		32	25	116	71	43	134	26	170	190	238	80	50	146	75	30	UC313-40	T313	6
UCT313		65																UC313		
UCT314-44	2-3/4		36	25	130	85	46	140	26	180	202	252	90	52	155	78	33	UC314-44	T314	7.05
UCT314		70																UC314		
UCT315-48	3		36	25	132	85	46	150	26	192	216	262	90	55	160	82	32	UC315-48	T315	9.28
UCT315		75																UC315		
UCT316-50	3-1/8		42	28	150	98	53	160	30	204	230	282	102	60	174	86	34	UC316-50	T316	10.03
UCT316		80																UC316		
UCT317-52	3-1/4		42	30	152	98	53	170	32	214	240	298	102	64	183	96	40	UC317-52	T317	13.3
UCT317		85																UC317		
UCT318-56	3-1/2		46	30	160	106	57	175	32	228	255	312	110	66	192	96	40	UC318-56	T318	14.1
UCT318		90																UC318		
UCT319-60	3-3/4		46	31	165	106	57	180	35	240	270	322	110	72	197	103	41	UC319-60	T319	16.3
UCT319		95																UC319		
UCT320-64	4		48	32	175	115	59	200	35	260	290	345	120	75	210	108	42	UC320-64	T320	21.2
UCT320		100																UC320		
UCT321		105	48	32	175	115	59	200	35	260	290	345	120	75	210	112	44	UC321	T321	19.8
UCT322		110	52	38	185	125	65	215	38	285	320	385	130	80	235	117	46	UC322	T322	25.7
UCT324		120	60	42	210	140	70	230	45	320	355	432	140	90	267	126	51	UC324	T324	36.5
UCT326		130	65	45	220	150	75	240	50	350	385	465	150	100	285	135	54	UC326	T326	46
UCT328		140	70	50	230	160	80	255	50	380	415	515	155	100	315	145	59	UC328	T328	55.5

UCTX



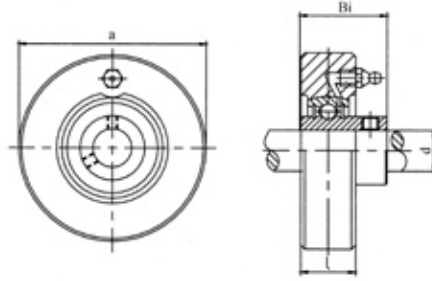
Unit No.	Shaft Dia d		Dimensions(mm)														Bearing No.	Housing No.	Housing Weight (kg)	
	(in)	(mm)	o	g	p	q	s	b	k	e	a	w	j	l	h	Bi				n
UCTX05-14	7/8		16	10	56	37	22	57	12	89	102	113	37	28	70	38.1	15.9	UCX05-14	TX05	1.01
UCTX05-15	15/16																	UCX05-15		
UCTX05-16	1																	UCX05-16		
UCTX05		25																UCX05		
UCTX06-18	1-1/8		16	13	64	37	22	64	12	89	102	129	37	30	78	42.9	17.5	UCX06-18	TX06	1.12
UCTX06-19	1-3/16																	UCX06-19		
UCTX06-20	1-1/4																	UCX06-20		
UCTX06		30																UC306		
UCTX07-20	1-1/4		19	15	83	49	29	83	16	102	114	144	49	36	88	49.2	19	UCX07-20	TX07	1.78
UCTX07-22	1-3/8																	UCX07-22		
UCTX07-23	1-7/16																	UCX07-23		
UCTX07		35																UC307		
UCTX08-24	1-1/2		19	15	83	49	29	83	16	102	117	144	49	36	87	49.2	19	UCX08-24	TX08	1.67
UCTX08		40																UCX08		
UCTX09-26	1-5/8		19	16	83	49	29	86	16	102	117	149	49	38	90	51.6	19	UCX09-26	TX09	1.8
UCTX09-27	1-11/16																	UCX09-27		
UCTX09-28	1-3/4																	UCX09-28		
UCTX09		45																UCX09		
UCTX10-30	1-7/8		25	19	102	64	35	95	22	130	146	171	64	42	106	55.6	22.2	UCX10-30	TX10	2.95
UCTX10-31	1-15/16																	UCX10-31		
UCTX10-32	2																	UCX10-32		
UCTX10		50																UCX10		
UCTX11-34	2-1/8		32	19	102	64	35	102	22	130	146	194	64	42	119	65.1	25.4	UCX11-34	TX11	3.3
UCTX11-35	2-3/16																	UCX11-35		
UCTX11		55																UCX11		
UCTX12-38	2-3/8		32	21	111	70	41	121	26	151	167	224	70	48	137	65.1	25.4	UCX12-38	TX12	5.33
UCTX12-39	2-7/16																	UCX12-39		
UCTX12		60																UCX12		
UCTX13-40	2-1/2		32	21	111	70	41	121	26	151	167	224	70	48	137	74.6	30.2	UCX13-40	TX13	5.15
UCTX13		65																UCX13		
UCTX14-43	2-11/16		32	21	111	70	41	121	26	151	167	232	70	48	140	77.8	33.3	UCX14-43	TX14	5.23
UCTX14-44	2-3/4																	UCX14-44		
UCTX14		70																UCX14		
UCTX15-47	2-15/16		32	21	111	70	41	121	28	165	184	235	70	48	140	82.6	33.3	UCX15-47	TX15	5.29
UCTX18-48	3																	UCX15-48		
UCTX15		75																UCX15		
UCTX16-50	3-1/8		38	28	124	73	48	157	28	173	198	260	73	54	162	85.7	34.1	UCX16-50	TX16	7.21
UCTX16		80																UCX16		
UCTX17-52	3-1/4		38	28	124	73	48	157	28	173	198	260	73	54	162	96	39.7	UCX17-52	TX17	7.18
UCTX17-55	3-7/16																	UCX17-55		
UCTX17		85																UCX17		

UCC2



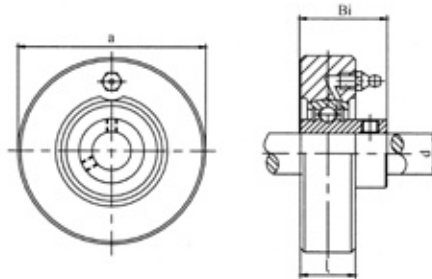
Unit No.	Shaft Dia d		Dimensions(mm)				Bearing No.	Housing No.	Housing Weight (kg)
	(in)	(mm)	a	l	Bi	n			
UCC201-8	1/2		72	20	31	12.7	UC201-8	C203	0.33
UCC202-9	9/16						UC202-9		
UCC202-10	5/8						UC202-10		
UCC203-11	11/16						UC203-11		
UCC201		12					UC201		
UCC202		15					UC202		
UCC203		17					UC203		
UCC204-12	3/4	20	72	20	31	12.7	UC204-12	C204	0.33
UCC204							UC204		
UCC205-13	13/16		80	22	34	14.3	UC205-13	C205	0.5
UCC205-14	7/8						UC205-14		
UCC205-15	15/16						UC205-15		
UCC205-16	1						UC205-16		
UCC205		25					UC205		
UCC206-17	1-1/16		85	27	38.1	15.9	UC206-17	C206	0.57
UCC206-18	1-1/8						UC206-18		
UCC206-19	1-3/16						UC206-19		
UCC206-20	1-1/4						UC206-20		
UCC206		30					UC206		
UCC207-20	1-1/4		90	28	42.9	17.5	UC207-20	C207	0.51
UCC207-21	1-5/16						UC207-21		
UCC207-22	1-3/8						UC207-22		
UCC207-23	1-7/16						UC207-23		
UCC207		35					UC207		
UCC208-24	1-1/2		100	30	49.2	19	UC208-24	C208	0.65
UCC208-25	1-9/16						UC208-25		
UCC208		40					UC208		

UCC2



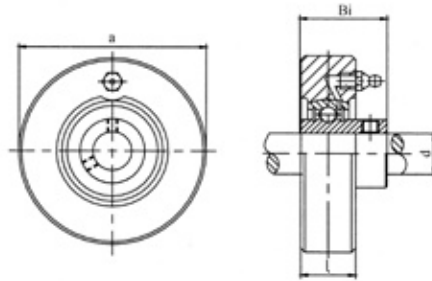
Unit No.	Shaft Dia d		Dimensions(mm)				Bearing No.	Housing No.	Housing Weight (kg)
	(in)	(mm)	a	l	Bi	n			
UCC209-26	1-5/8		110	31	49.2	19	UC209-26	C209	0.9
UCC209-27	1-11/16						UC209-27		
UCC209-28	1-3/4						UC209-28		
UCC209		45					UC209		
UCC210-29	1-13/16		120	33	51.6	19	UC210-29	C210	1.2
UCC210-30	1-7/8						UC210-30		
UCC210-31	1-15/16						UC210-31		
UCC210-32	2						UC210-32		
UCC210		50					UC210		
UCC211-32	2		125	35	55.6	22.2	UC211-32	C211	1.25
UCC211-33	2-1/16						UC211-33		
UCC211-34	2-1/8						UC211-34		
UCC211-35	2-3/16						UC211-35		
UCC211		55					UC211		
UCC212-36	2-1/4		130	38	65.1	25.4	UC212-36	C212	1.47
UCC212-37	2-5/16						UC212-37		
UCC212-38	2-3/8						UC212-38		
UCC212-39	2-7/16						UC212-39		
UCC212		60					UC212		
UCC213-40	2-1/2		140	40	65.1	25.4	UC213-40	C213	1.75
UCC213-41	2-9/16						UC213-41		
UCC213		65					UC213		

UCCX



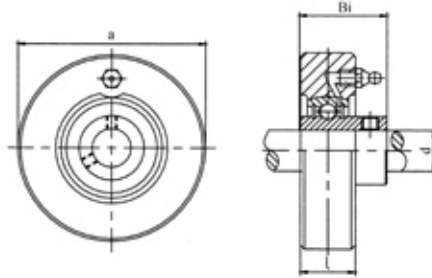
Unit No.	Shaft Dia d		Dimensions(mm)				Bearing No.	Housing No.	Weight (kg)
	(in)	(mm)	a	l	Bi	n			
UCCX05-14	7/8		90	27	38.1	15.9	UCX05-14	CX05	0.71
UCCX05-15	15/16						UCX05-15		
UCCX05-16	1						UCX05-16		
UCCX05		25					UCX05		
UCCX06-18	1-1/8		100	30	42.9	17.5	UCX06-18	CX6	0.92
UCCX06-19	1-3/16						UCX06-19		
UCCX06-20	1-1/4						UCX06-20		
UCCX06		30					UC306		
UCCX07-20	1-1/4		110	34	49.2	19	UCX07-20	CX7	1.18
UCCX07-22	1-3/8						UCX07-22		
UCCX07-23	1-7/16						UCX07-23		
UCCX07		35					UC307		
UCCX08-24	1-1/2		120	38	49.2	19	UCX08-24	CX8	1.57
UCCX08		40					UCX08		
UCCX09-26	1-5/8		120	38	51.6	19	UCX09-26	CX9	1.4
UCCX09-27	1-11/16						UCX09-27		
UCCX09-28	1-3/4						UCX09-28		
UCCX09		45					UCX09		
UCCX10-30	1-7/8		130	40	55.6	22.2	UCX10-30	CX10	1.65
UCCX10-31	1-15/16						UCX10-31		
UCCX10-32	2						UCX10-32		
UCCX10		50					UCX10		
UCCX11-34	2-1/8		150	42	65.1	25.4	UCX11-34	CX11	2.5
UCCX11-35	2-3/16						UCX11-35		
UCCX11-36	2-1/4						UCX11-36		
UCCX11		55					UCX11		
UCCX12-38	2-3/8		160	44	65.1	25.4	UCX12-38	CX12	2.73
UCCX12-39	2-7/16						UCX12-39		
UCCX12		60					UCX12		

UCC3



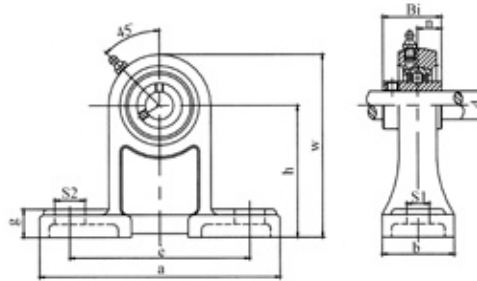
Unit No.	Shaft Dia d		Dimensions(mm)				Bearing No.	Housing No.	Weight (kg)
	(in)	(mm)	a	l	Bi	n			
UCC305-14	7/8		90	26	38	15	UC305-14	C305	0.75
UCC305-15	15/16								
UCC305-16	1								
UCC305		25							
UCC306-18	1-1/8		100	28	43	17	UC306-18	C306	0.84
UCC306-19	1-3/16								
UCC306		30							
UCC307-20	1-1/4		110	32	48	19	UC307-20	C307	1.09
UCC307-21	1-5/16								
UCC307-22	1-3/8								
UCC307-23	1-7/16								
UCC307		35							
UCC308-24	1-1/2		120	34	52	19	UC308-24	C308	1.24
UCC308-25	1-9/16								
UCC308		40							
UCC309-26	1-5/8		130	38	57	22	UC309-26	C309	1.42
UCC309-27	1-11/16								
UCC309-28	1-3/4								
UCC309		45							
UCC310-30	1-7/8		140	40	61	22	UC310-30	C310	1.65
UCC310-31	1-15/16								
UCC310		50							
UCC311-32	2		150	44	66	25	UC311-32	C311	1.83
UCC311-34	2-1/8								
UCC311-35	2-3/16								
UCC311		55							
UCC312-36	2-1/4		160	46	71	26	UC312-36	C312	2.2
UCC312-38	2-3/8								
UCC312-39	2-7/16								
UCC312		60							

UCC3



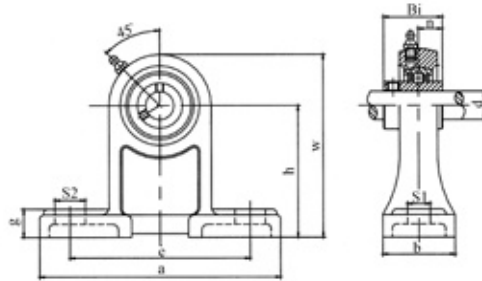
Unit No.	Shaft Dia d		Dimensions(mm)				Bearing No.	Housing No.	Weight (kg)
	(in)	(mm)	a	l	Bi	n			
UCC313-40	2-1/2		170	50	75	30	UC313-40	C313	2.55
UCC313		65					UC313		
UCC314-44	2-3/4		180	52	78	33	UC314-44	C314	2.71
UCC314		70					UC314		
UCC315-48	3		190	55	82	32	UC315-48	C315	3.08
UCC315		75					UC315		
UCC316-50	3-1/8		200	60	86	34	UC316-50	C316	3.5
UCC316		80					UC316		
UCC317-52	3-1/4		215	64	96	40	UC317-52	C317	4.3
UCC317		85					UC317		
UCC318-56	3-1/2		225	66	96	40	UC318-56	C318	4.4
UCC318		90					UC318		
UCC319-60	3-3/4		240	72	103	41	UC319-60	C319	6.3
UCC319		95					UC319		
UCC320-64	4		260	75	108	42	UC320-64	C320	8.2
UCC320		100					UC320		
UCC321		105	260	75	112	44	UC321	C321	7.8
UCC322		110	300	80	117	46	UC322	C322	13.7
UCC324		120	320	90	126	51	UC324	C324	16.5
UCC326		130	340	100	135	54	UC326	C326	19
UCC328		140	360	100	145	59	UC328	C328	20.5

UCPH2



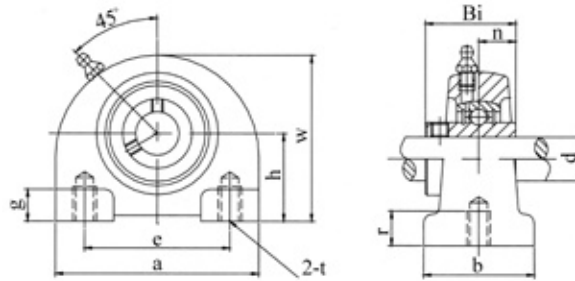
Unit No.	Shaft Dia d		Dimensions(mm)										Bolt Used		Bearing No.	Housing No.	Housing Weight (kg)
	(in)	(mm)	h	a	e	b	S2	S1	g	w	Bi	n	(mm)	(in)			
UCPH201-8	1/2		70	127	95	40	19	13	15	101	31	12.7	M10	3/8	UC201-8	PH204	0.75
UCPH202-9	9/16														UC202-9		
UCPH202-10	5/8														UC202-10		
UCPH203-11	11/16														UC203-11		
UCPH204-12	3/4														UC204-12		
UCPH201	12														UC201		
UCPH202	15														UC202		
UCPH203	17														UC203		
UCPH204	20														UC204		
UCPH205-13	13/16		80	140	105	50	19	13	16	114	34.1	14.3	M10	3/8	UC205-13	PH205	1
UCPH205-14	7/8														UC205-14		
UCPH205-15	15/16														UC205-15		
UCPH205-16	1														UC205-16		
UCPH205	25														UC205		
UCPH206-17	1-1/16		90	165	121	50	21	17	18	130	38.1	15.9	M14	1/2	UC206-17	PH206	1.42
UCPH206-18	1-1/8														UC206-18		
UCPH206-19	1-3/16														UC206-19		
UCPH206-20	1-1/4														UC206-20		
UCPH206	30														UC206		
UCPH207-20	1-1/4		95	167	127	60	21	17	19	140	42.9	17.5	M14	1/2	UC207-20	PH207	1.55
UCPH207-21	1-5/16														UC207-21		
UCPH207-22	1-3/8														UC207-22		
UCPH207-23	1-7/16														UC207-23		
UCPH207	35														UC207		
UCPH208-24	1-1/2		100	184	137	70	25	17	19	149	49.2	19	M14	1/2	UC208-24	PH208	2.15
UCPH208-25	1-9/16														UC208-25		
UCPH208	40														UC208		
UCPH209-26	1-5/8		105	190	146	70	25	17	20	157	49.2	19	M14	1/2	UC209-26	PH209	2.31
UCPH209-27	1-11/16														UC209-27		
UCPH209-28	1-3/4														UC209-28		
UCPH209	45														UC209		

UCPH2



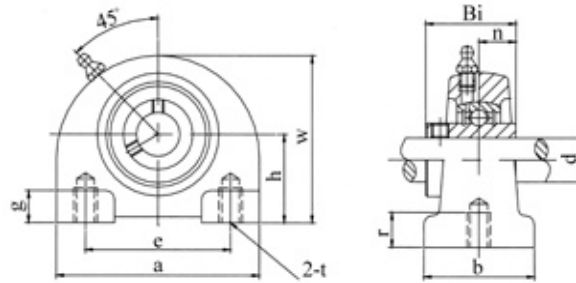
Unit No.	Shaft Dia d		Dimensions(mm)										Bolt Used		Bearing No.	Housing No.	Housing Weight (kg)
	(in)	(mm)	h	a	e	b	S2	S1	g	w	Bi	n	(mm)	(in)			
UCPH210-29	1-13/16		110	206	159	70	25	20	22	165	51.6	19	M16	5/8	UC210-29	PH210	2.8
UCPH210-30	1-7/8	UC210-30															
UCPH210-31	1-15/16	UC210-31															
UCPH210-32	2	UC210-32															
UCPH210	50	UC210															
UCPH211-32	2		120	219	171	75	22	19	22	181	55.6	22.2	M16	5/8	UC211-32	PH211	4.4
UCPH211-33	2-1/16	UC211-33															
UCPH211-34	2-1/8	UC211-34															
UCPH211-35	2-3/16	UC211-35															
UCPH211	55	UC211															
UCPH212-36	2-1/4		130	235	184	85	23	19	25	197	65.1	25.4	M16	5/8	UC212-36	PH212	4.8
UCPH212-37	2-5/16	UC212-37															
UCPH212-38	2-3/8	UC212-38															
UCPH212-39	2-7/16	UC212-39															
UCPH212	60	UC212															
UCPH213-40	2-1/2		140	262	203	95	28	23	27	212	65.1	25.4	M20	3/4	UC213-40	PH213	5.6
UCPH213-41	2-9/16	UC213-41															
UCPH213	65	UC213															
UCPH214-42	2-5/8		150	268	210	105	28	23	28	225	74.6	30.2	M20	3/4	UC214-42	PH214	6.2
UCPH214-43	2-11/16	UC214-43															
UCPH214-44	2-3/4	UC214-44															
UCPH214	70	UC214															
UCPH215-45	2-13/16		160	275	217	115	28	23	29	238	77.8	33.3	M20	3/4	UC215-45	PH215	7.4
UCPH215-46	2-7/8	UC215-46															
UCPH215-47	2-15/16	UC215-47															
UCPH215-48	3	UC215-48															
UCPH215	75	UC215															
UCPH216-50	3-1/8		170	290	232	125	28	23	30	253	82.6	33.3	M20	3/4	UC216-50	PH216	8
UCPH216	80	UC216															

UCPA2



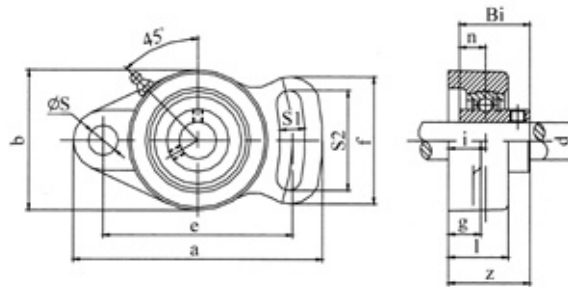
Unit No.	Shaft Dia d		Dimensions(mm)										Bolt Used (mm)	Bearing No.	Housing No.	Housing Weight (kg)
	(in)	(mm)	h	a	e	b	t	r	g	w	Bi	n				
UCPA201-8	1/2		30.2	76	52	38	M10	15	8	62	31	12.7	M10x1.5	UC201-8	PA204	0.42
UCPA202-9	9/16													UC202-9		
UCPA202-10	5/8													UC202-10		
UCPA203-11	11/16													UC203-11		
UCPA204-12	3/4													UC204-12		
UCPA201		12												UC201		
UCPA202		15												UC202		
UCPA203		17												UC203		
UCPA204		20	UC204													
UCPA205-13	13/16		36.5	84	56	38	M10	15	10	72	34.1	14.3	M10x1.5	UC205-13	PA205	0.61
UCPA205-14	7/8													UC205-14		
UCPA205-15	15/16													UC205-15		
UCPA205-16	1													UC205-16		
UCPA205		25												UC205		
UCPA206-17	1-1/16		42.9	94	66	48	M14	18	10	84	38.1	15.9	M14x2	UC206-17	PA206	0.93
UCPA206-18	1-1/8													UC206-18		
UCPA206-19	1-3/16													UC206-19		
UCPA206-20	1-1/4													UC206-20		
UCPA206		30												UC206		
UCPA207-20	1-1/4		47.6	110	80	48	M14	20	12	95	42.9	17.5	M14x2	UC207-20	PA207	1.21
UCPA207-21	1-5/16													UC207-21		
UCPA207-22	1-3/8													UC207-22		
UCPA207-23	1-7/16													UC207-23		
UCPA207		35												UC207		
UCPA208-24	1-1/2		49.2	116	84	54	M14	20	12	100	49.2	19	M14x2	UC208-24	PA208	1.47
UCPA208-25	1-9/16													UC208-25		
UCPA208		40												UC208		

UCPA2



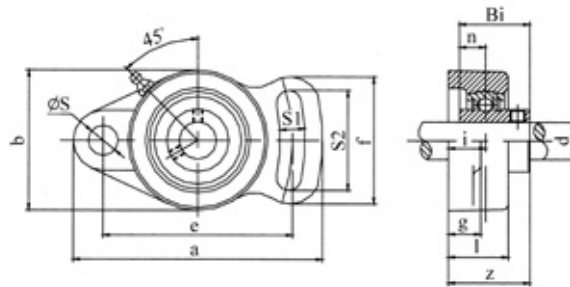
Unit No.	Shaft Dia d		Dimensions(mm)										Bolt Used (mm)	Bearing No.	Housing No.	Housing Weight (kg)
	(in)	(mm)	h	a	e	b	t	r	g	w	Bi	n				
UCPA209-26	1-5/8		54.2	120	90	54	M14	25	12	108	49.2	19	M14x2	UC209-26	PA209	1.5
UCPA209-27	1-11/16													UC209-27		
UCPA209-28	1-3/4													UC209-28		
UCPA209		45												UC209		
UCPA210-29	1-13/16		57.2	130	94	60	M16	25	14	116	51.6	19	M16x2	UC210-29	PA210	2
UCPA210-30	1-7/8													UC210-30		
UCPA210-31	1-15/16													UC210-31		
UCPA210-32	2													UC210-32		
UCPA210		50												UC210		
UCPA211-32	2		63.5	140	104	66	M16	25	14	125	55.6	22.2	M16x2	UC211-32	PA211	2.5
UCPA211-33	2-1/16													UC211-33		
UCPA211-34	2-1/8													UC211-34		
UCPA211-35	2-3/16													UC211-35		
UCPA211		55												UC211		
UCPA212-36	2-1/4		69.9	150	114	68	M16	25	15	138	65.1	25.4	M16x2	UC212-36	PA212	2.7
UCPA212-37	2-5/16													UC212-37		
UCPA212-38	2-3/8													UC212-38		
UCPA212-39	2-7/16													UC212-39		
UCPA212		60												UC212		
UCPA213-40	2-1/2		76.2	160	124	70	M16	25	15	150	65.1	25.4	M16x2	UC213-40	PA213	4.37
UCPA213-41	2-9/16													UC213-41		
UCPA213		65												UC213		

UCFA2



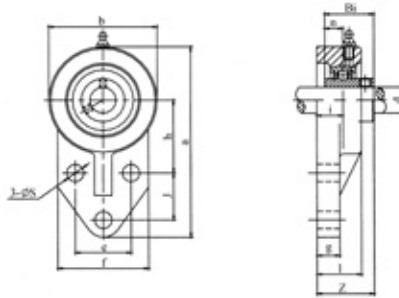
Unit No.	Shaft Dia d		Dimensions(mm)													Bolt Used		Bearing No.	Housing No.	Housing Weight (kg)
	(in)	(mm)	a	e	i	g	l	S	S1	S2	b	f	z	Bi	n	mm	in			
UCFA201-8	1/2		98	78	15	12	25.5	10	10	40	60	50	33.3	31	12.7	M8	5/16	UC201-8	FA204	0.3
UCFA202-9	9/16																	UC202-9		
UCFA202-10	5/8																	UC202-10		
UCFA203-11	11/16																	UC203-11		
UCFA204-12	3/4																	UC204-12		
UCFA201		12																UC201		
UCFA202		15																UC202		
UCFA203		17																UC203		
UCFA204		20	UC204																	
UCFA205-13	13/16		125	98	16	14	27	12	13	51	68	65	35.7	34	14.3	M10	3/8	UC205-13	FA205	0.5
UCFA205-14	7/8																	UC205-14		
UCFA205-15	15/16																	UC205-15		
UCFA205-16	1																	UC205-16		
UCFA205		25																UC205		
UCFA206-17	1-1/16		144	117	18	14	31	12	13	58	80	72	40.2	38.1	15.9	M10	3/8	UC206-17	FA206	0.65
UCFA206-18	1-1/8																	UC206-18		
UCFA206-19	1-3/16																	UC206-19		
UCFA206-20	1-1/4																	UC206-20		
UCFA206		30																UC206		
UCFA207-20	1-1/4		161	130	19	16	34	14	15	66	90	82	44.4	42.9	17.5	M12	7/16	UC207-20	FA207	0.9
UCFA207-21	1-5/16																	UC207-21		
UCFA207-22	1-3/8																	UC207-22		
UCFA207-23	1-7/16																	UC207-23		
UCFA207		35																UC207		
UCFA208-24	1-1/2		175	144	21	16	36	14	15	71	100	87	51.2	49.2	19	M12	7/16	UC208-24	FA208	1
UCFA208-25	1-9/16																	UC208-25		
UCFA208		40																UC208		

UCFA2



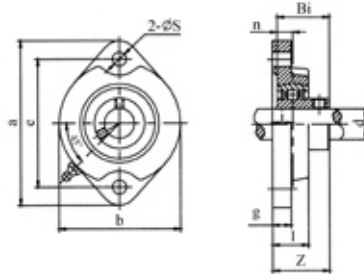
Unit No.	Shaft Dia d		Dimensions(mm)													Bolt Used		Bearing No.	Housing No.	Housing Weight (kg)
	(in)	(mm)	a	e	i	g	l	S	S1	S2	b	f	z	Bi	n	mm	in			
UCFA209-26	1-5/8		181	148	22	18	38	16	17	72	108	90	52.2	49.2	19	M14	1/2	UC209-26	FA209	1.2
UCFA209-27	1-11/16																	UC209-27		
UCFA209-28	1-3/4																	UC209-28		
UCFA209		45																UC209		
UCFA210-29	1-13/16		190	157	22	18	40	16	17	76	115	94	54.6	51.6	19	M14	1/2	UC210-29	FA210	1.4
UCFA210-30	1-7/8																	UC210-30		
UCFA210-31	1-15/16																	UC210-31		
UCFA210-32	2																	UC210-32		
UCFA210		50																UC210		
UCFA211-32	2		219	184	25	20	43	16	17	86	130	104	58.4	55.6	22.2	M14	1/2	UC211-32	FA211	2.3
UCFA211-33	2-1/16																	UC211-33		
UCFA211-34	2-1/8																	UC211-34		
UCFA211-35	2-3/16																	UC211-35		
UCFA211		55																UC211		
UCFA212-36	2-1/4		240	202	29	18	48	18	19	100	140	120	68.7	65.1	25.4	M16	5/8	UC212-36	FA212	2.75
UCFA212-37	2-5/16																	UC212-37		
UCFA212-38	2-3/8																	UC212-38		
UCFA212-39	2-7/16																	UC212-39		
UCFA212		60																UC212		
UCFA213-40	2-1/2		248	210	30	20	49	18	19	106	152	126	69.7	65.1	25.4	M16	5/8	UC213-40	FA213	3.35
UCFA213-41	2-9/16																	UC213-41		
UCFA213		65																UC213		

UCFB2



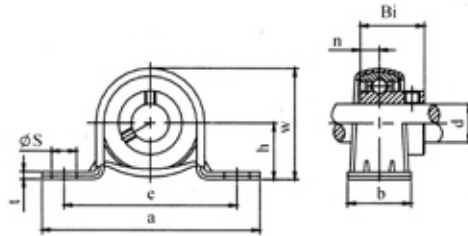
Unit No.	Shaft Dia d		Dimensions(mm)													Bolt Used		Bearing No.	Housing No.	Housing Weight (kg)
	(in)	(mm)	a	h	e	j	i	g	l	s	b	f	z	Bi	n	mm	in			
UCFB201-8	1/2																	UC201-8	FB204	0.38
UCFB202-9	9/16																	UC202-9		
UCFB202-10	5/8																	UC202-10		
UCFB203-11	11/16																	UC203-11		
UCFB204-12	3/4		108	42.9	38.1	22	15.9	8	25.4	10	63.5	60.3	34.1	31	12.7	M8	5/16	UC204-12		
UCFB201		12																UC201		
UCFB202		15																UC202		
UCFB203		17																UC203		
UCFB204		20																UC204		
UCFB205-13	13/16																	UC205-13	FB205	0.49
UCFB205-14	7/8																	UC205-14		
UCFB205-15	15/16		121	46	41.3	28.5	16.7	9.5	28.5	10	70	63.5	36.5	34	14.3	M8	5/16	UC205-15		
UCFB205-16	1																	UC205-16		
UCFB205		25																UC205		
UCFB206-17	1-1/16																	UC206-17	FB206	0.61
UCFB206-18	1-1/8																	UC206-18		
UCFB206-19	1-3/16		137	52.4	47.6	31.7	18.6	9.5	32	10	83	70	40.9	38.1	15.9	M8	5/16	UC206-19		
UCFB206-20	1-1/4																	UC206-20		
UCFB206		30																UC206		
UCFB207-20	1-1/4																	UC207-20	FB207	0.75
UCFB207-21	1-5/16																	UC207-21		
UCFB207-22	1-3/8		156	60.3	50.8	31.7	21	12.7	36.5	13	95	83	46.4	42.9	17.5	M10	3/8	UC207-22		
UCFB207-23	1-7/16																	UC207-23		
UCFB207		35																UC207		
UCFB208-24	1-1/2																	UC208-24	FB208	0.8
UCFB208-25	1-9/16		164	60.3	50	41.3	21	15.9	35.7	12	100	78	51.2	49.2	19	M10	3/8	UC208-25		
UCFB208		40																UC208		
UCFB209-26	1-5/8																	UC209-26	FB209	1.5
UCFB209-27	1-11/16																	UC209-27		
UCFB209-28	1-3/4		174	65	54	42.9	21.8	18.3	38	12	106	80	51.2	49.2	19	M10	3/8	UC209-28		
UCFB209		45																UC209		
UCFB210-29	1-13/16																	UC210-29	FB210	1.8
UCFB210-30	1-7/8																	UC210-30		
UCFB210-31	1-15/16		190	74.6	70	41.3	21.8	12.7	38	13	118	102	53.6	51.6	19	M10	3/8	UC210-31		
UCFB210-32	2																	UC210-32		
UCFB210		50																UC210		

SBLF2



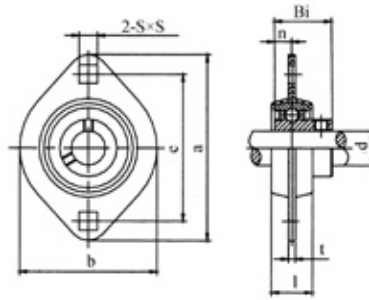
Unit No.	Shaft Dia d		Dimensions(mm)										Bolt Used		Bearing No.	Housing No.	Housing Weight (kg)
	(in)	(mm)	a	e	i	g	l	s	b	n	z	Bi	(mm)	(in)			
SBLF201-8	1/2														SB201-8	LF203	0.15
SBLF202-9	9/16													SB202-9			
SBLF202-10	5/8													SB202-10			
SBLF203-11	11/16		81	63.5	9.5	9.5	18	8	56	6	25.5	22	M6	1/4	SB203-11		
SBLF201		12													SB201		
SBLF202		15													SB202		
SBLF203		17													SB203		
SBLF204-12	3/4														SB204-12	LF204	0.2
SBLF204		20	90	71.5	11	11	20	10	61	7	29	25	M8	5/16	SB204		
SBLF205-14	7/8														SB205-14	LF205	0.3
SBLF205-15	15/16														SB205-15		
SBLF205-16	1														SB205-16		
SBLF205		25	95	76	11	11	20	10	64	7.5	30.5	27	M8	5/16	SB205		
SBLF206-18	1-1/8														SB206-18	LF206	0.36
SBLF206-19	1-3/16														SB206-19		
SBLF206-20	1-1/4														SB206-20		
SBLF206		30	113	90.5	12	12	22.5	12	76	8	34	30	M10	3/8	SB206		
SBLF207-20	1-1/4														SB207-20	LF207	0.5
SBLF207-22	1-3/8														SB207-22		
SBLF207-23	1-7/16														SB207-23		
SBLF207		35	122	100	13	13	24	12	89	8.5	36.5	32	M10	3/8	SB207		

SBPP2



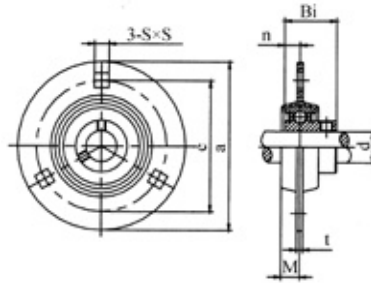
Unit No.	Shaft Dia d		Dimensions(mm)									Bolt Used		Bearing No.	Housing No.	Housing Weight (kg)
	(in)	(mm)	h	a	e	b	s	t	w	n	Bi	(mm)	(in)			
SBPP201-8	1/2		22.2	86	68	25	9.5	3.2	44	6	22	M8	5/16	SB201-8	PP203	0.16
SBPP202-9	9/16													SB202-9		
SBPP202-10	5/8													SB202-10		
SBPP203-11	11/16													SB203-11		
SBPP201		12												SB201		
SBPP202		15												SB202		
SBPP203		17												SB203		
SBPP204-12	3/4		25.4	98	76	32	9.5	3.2	50	7	25	M8	5/16	SB204-12	PP204	0.21
SBPP204		20												SB204		
SBPP205-13	13/16		28.6	108	86	32	11.5	4	56	7.5	27	M10	3/8	SB205-13	PP205	0.29
SBPP205-14	7/8													SB205-14		
SBPP205-15	15/16													SB205-15		
SBPP205-16	1													SB205-16		
SBPP205		25												SB205		
SBPP206-17	1-1/16		33.3	117	95	38	11.5	4	66	8	30	M10	3/8	SB206-17	PP206	0.45
SBPP206-18	1-1/8													SB206-18		
SBPP206-19	1-3/16													SB206-19		
SBPP206-20	1-1/4													SB206-20		
SBPP206		30												SB206		
SBPP207-20	1-1/4		39.7	129	106	42	11.5	4.6	78	8.5	32	M10	3/8	SB207-20	PP207	0.61
SBPP207-21	1-5/16													SB207-21		
SBPP207-22	1-3/8													SB207-22		
SBPP207-23	1-7/16													SB207-23		
SBPP207		35												SB207		

SBPLF2



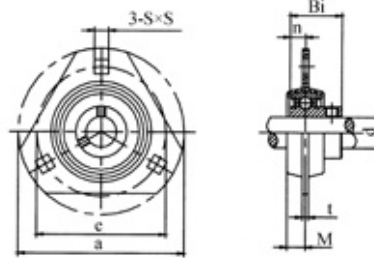
Unit No.	Shaft Dia d		Dimensions(mm)								Bolt Used		Bearing No.	Housing No.	Housing Weight (kg)
	(in)	(mm)	a	e	l	b	t	s	n	Bi	(mm)	(in)			
SBPFL201-8	1/2		81	63	14	59	2	7	6	22	M6	1/4	SB201-8	PFL203	0.19
SBPFL202-9	9/16												SB202-9		
SBPFL202-10	5/8												SB202-10		
SBPFL203-11	11/16												SB203-11		
SBPFL201		12											SB201		
SBPFL202		15											SB202		
SBPFL203		17											SB203		
SBPFL204-12	3/4		90	71	16	67	2	9	7	25	M8	5/16	SB204-12	PFL204	0.24
SBPFL204		20											SB204		
SBPFL205-14	7/8		95	76	18	71	2	9	7.5	27	M8	5/16	SB205-14	PFL205	0.28
SBPFL205-15	15/16												SB205-15		
SBPFL205-16	1												SB205-16		
SBPFL205		25											SB205		
SBPFL206-18	1-1/8		113	90	18	84	2.6	11	8	30	M10	3/8	SB206-18	PFL206	0.38
SBPFL206-19	1-3/16												SB206-19		
SBPFL206-20	1-1/4												SB206-20		
SBPFL206		30											SB206		
SBPFL207-20	1-1/4		122	100	20	94	2.6	11	8.5	32	M10	3/8	SB207-20	PFL207	0.65
SBPFL207-21	1-5/16												SB207-21		
SBPFL207-22	1-3/8												SB207-22		
SBPFL207-23	1-7/16												SB207-23		
SBPFL207		35											SB207		

SBPF2



Unit No.	Shaft Dia d		Dimensions(mm)							Bolt Used		Bearing No.	Housing No.	Housing Weight (kg)
	(in)	(mm)	a	e	M	t	s	n	Bi	(mm)	(in)			
SBPF201-8	1/2		81	64	7	4	7	6	22	M6	1/4	SB201-8	PF203	0.2
SBPF202-9	9/16											SB202-9		
SBPF202-10	5/8											SB202-10		
SBPF203-11	11/16											SB203-11		
SBPF201		12										SB201		
SBPF202		15										SB202		
SBPF203		17	SB203											
SBPF204-12	3/4		90	71	8	4	9	7	25	M8	5/16	SB204-12	PF204	0.25
SBPF204		20										SB204		
SBPF205-14	7/8		95	76	9	4	9	7.5	27	M8	5/16	SB205-14	PF205	0.35
SBPF205-15	15/16											SB205-15		
SBPF205-16	1											SB205-16		
SBPF205		25										SB205		
SBPF206-18	1-1/8		113	90	9	5.2	11	8	30	M10	3/8	SB206-18	PF206	0.54
SBPF206-19	1-3/16											SB206-19		
SBPF206-20	1-1/4											SB206-20		
SBPF206		30										SB206		
SBPF207-20	1-1/4		122	100	10	5.2	11	8.5	32	M10	3/8	SB207-20	PF207	0.71
SBPF207-22	1-3/8											SB207-22		
SBPF207-23	1-7/16											SB207-23		
SBPF207		35										SB207		

SBPFT2



Unit No.	Shaft Dia d		Dimensions(mm)								Bolt Used		Bearing No.	Housing No.	Housing Weight (kg)
	(in)	(mm)	a	e	M	t	W	s	n	Bi	(mm)	(in)			
SBPFT201-8	1/2		81	64	7	4	29	7	6	22	M6	1/4	SB201-8	PFT203	0.2
SBPFT202-9	9/16												SB202-9		
SBPFT202-10	5/8												SB202-10		
SBPFT203-11	11/16												SB203-11		
SBPFT201		12											SB201		
SBPFT202		15											SB202		
SBPFT203		17											SB203		
SBPFT204-12	3/4		90	71	8	4	33	9	7	25	M8	5/16	SB204-12	PFT204	0.25
SBPFT204		20											SB204		
SBPFT205-14	7/8		95	76	9	4	35	9	7.5	27	M8	5/16	SB205-14	PFT205	0.35
SBPFT205-15	15/16												SB205-15		
SBPFT205-16	1												SB205-16		
SBPFT205		25											SB205		
SBPFT206-18	1-1/8		113	90	9	5.2	38	11	8	30	M10	3/8	SB206-18	PFT206	0.54
SBPFT206-19	1-3/16												SB206-19		
SBPFT206-20	1-1/4												SB206-20		
SBPFT206		30											SB206		
SBPFT207-20	1-1/4		122	100	10	5.2	45	11	8.5	32	M10	3/8	SB207-20	PFT207	0.71
SBPFT207-22	1-3/8												SB207-22		
SBPFT207-23	1-7/16												SB207-23		
SBPFT207		35											SB207		